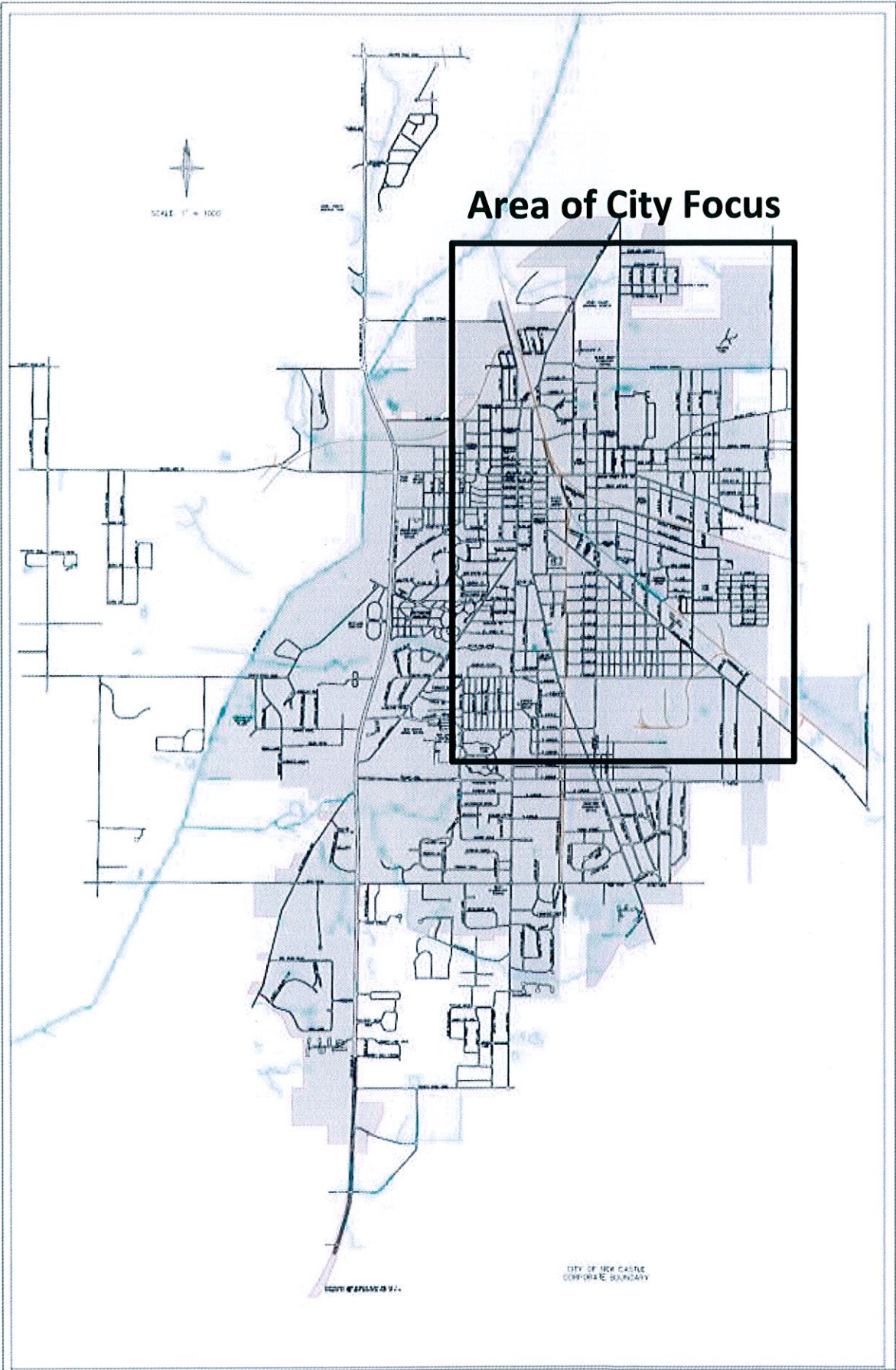


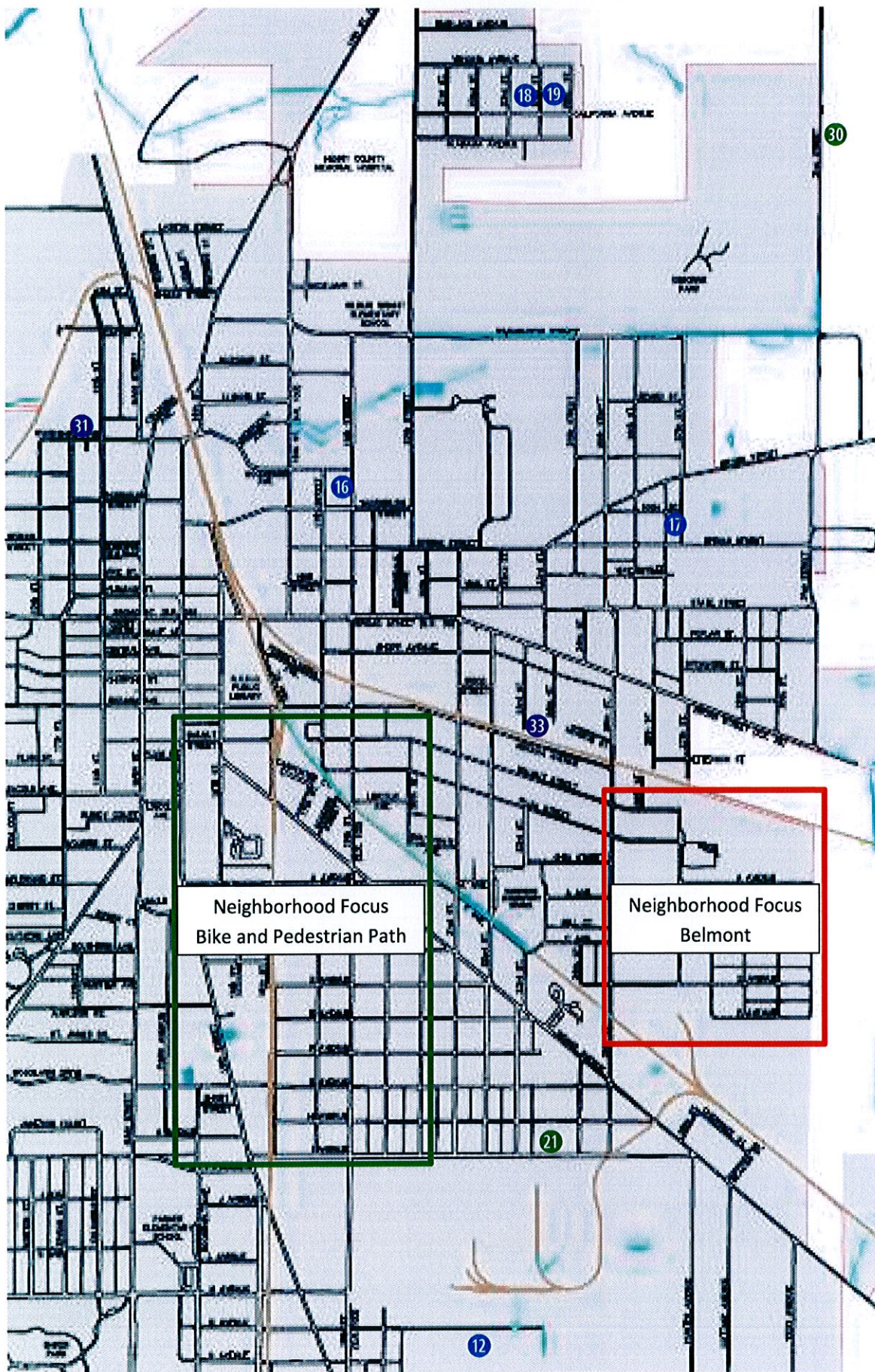
APPENDIX



Area of City Focus

SCALE 1" = 1000'

CITY OF NEW CASTLE
CORPORATE BOUNDARY



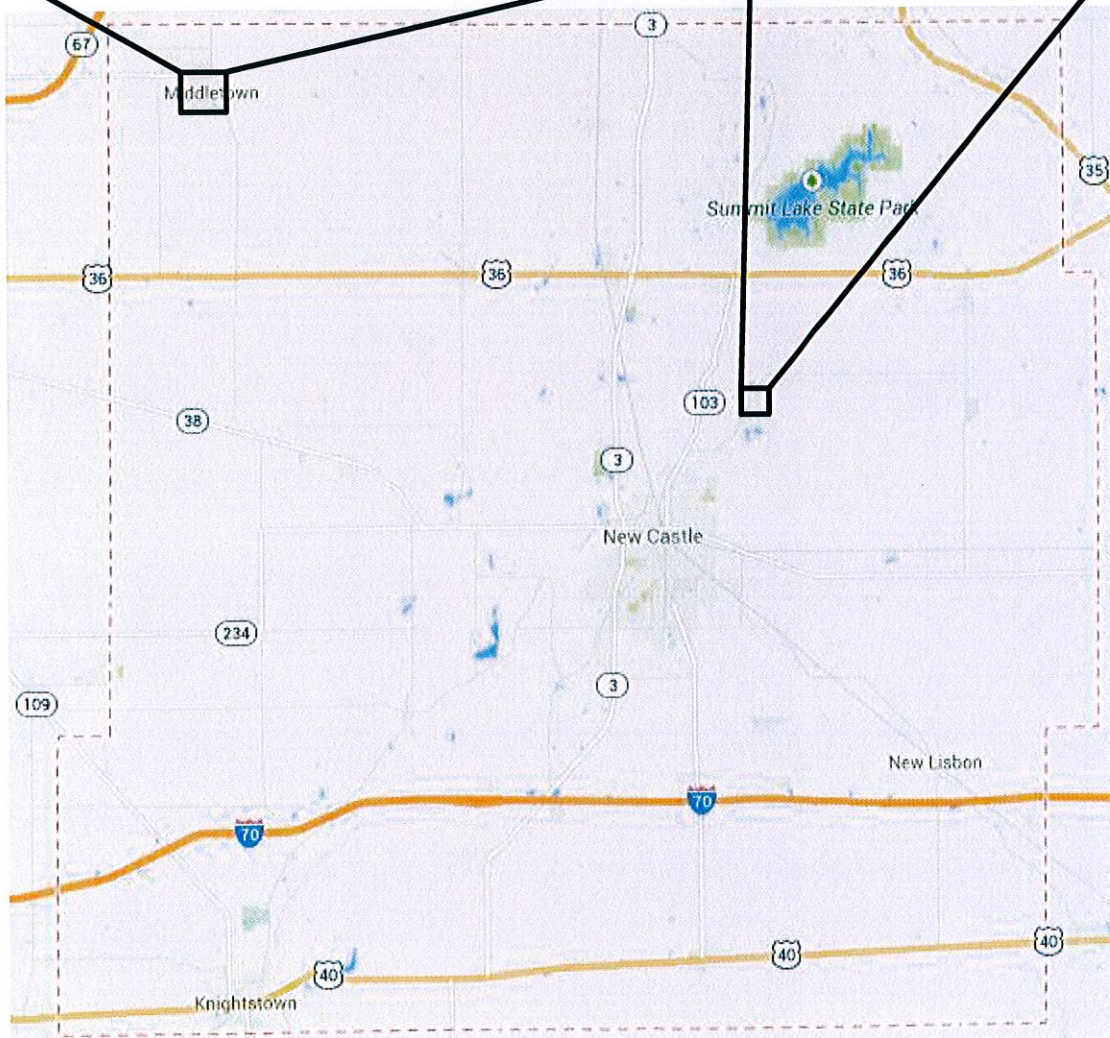
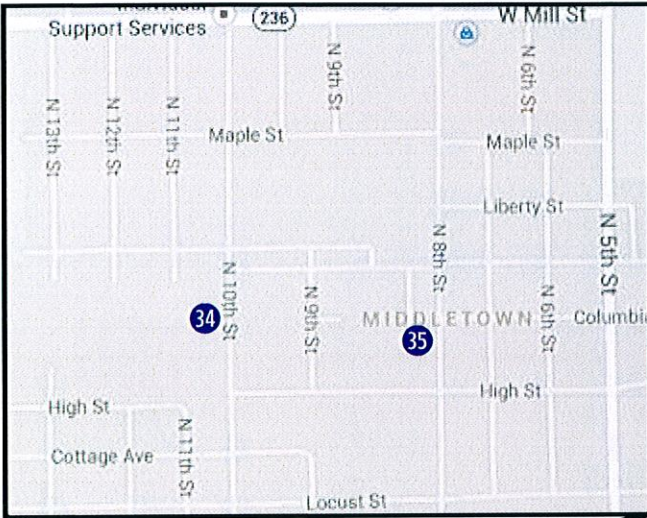
Neighborhood Focus
Bike and Pedestrian Path

Neighborhood Focus
Belmont

City of New Castle

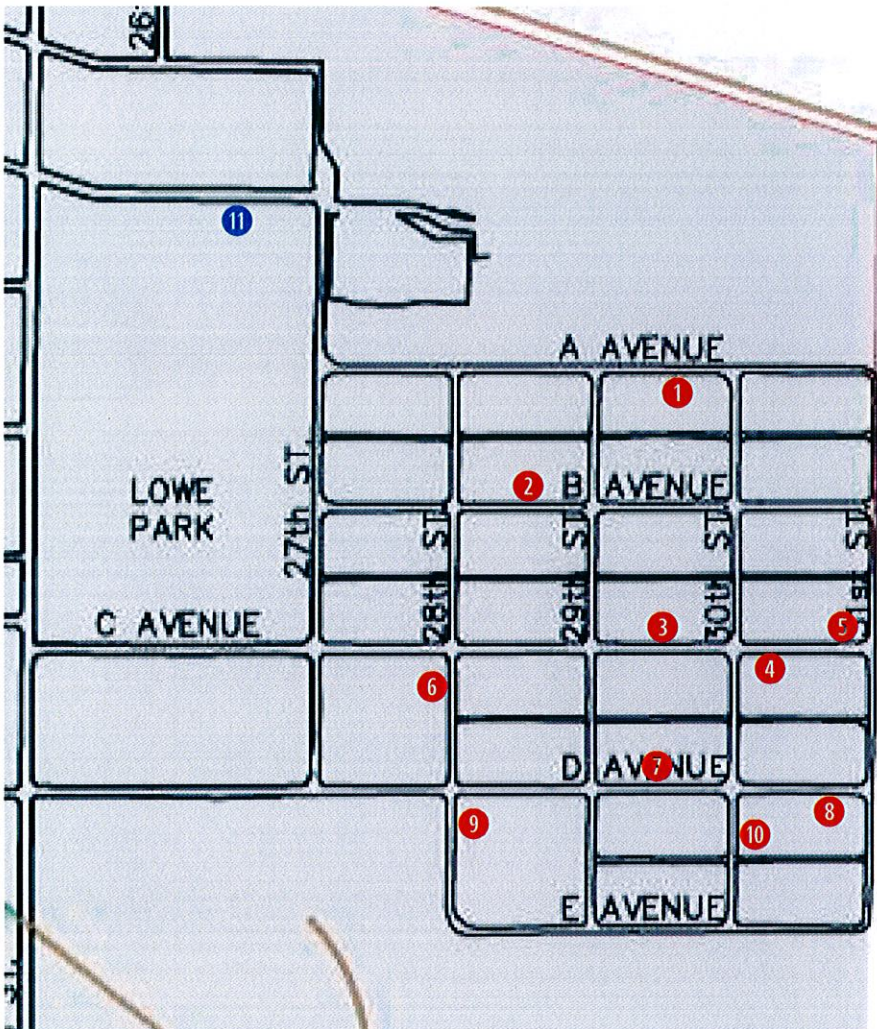
- 12 2117 N Avenue (Interlocal CAP)
- 16 423 North 18th Street (Interlocal CAP)
- 17 2709 High Street (Interlocal CAP)
- 18 1709 North 24th Street (Interlocal CAP)
- 19 1709 North 24th Street (Interlocal CAP)
- 21 2302 I Avenue (Healthy Communities)
- 30 790 North Hillsboro Road (Healthy Communities)
- 31 1110 Woodward (Henry County RDC)
- 33 244 South 23rd Street (Henry County RDC)

Henry County, Indiana



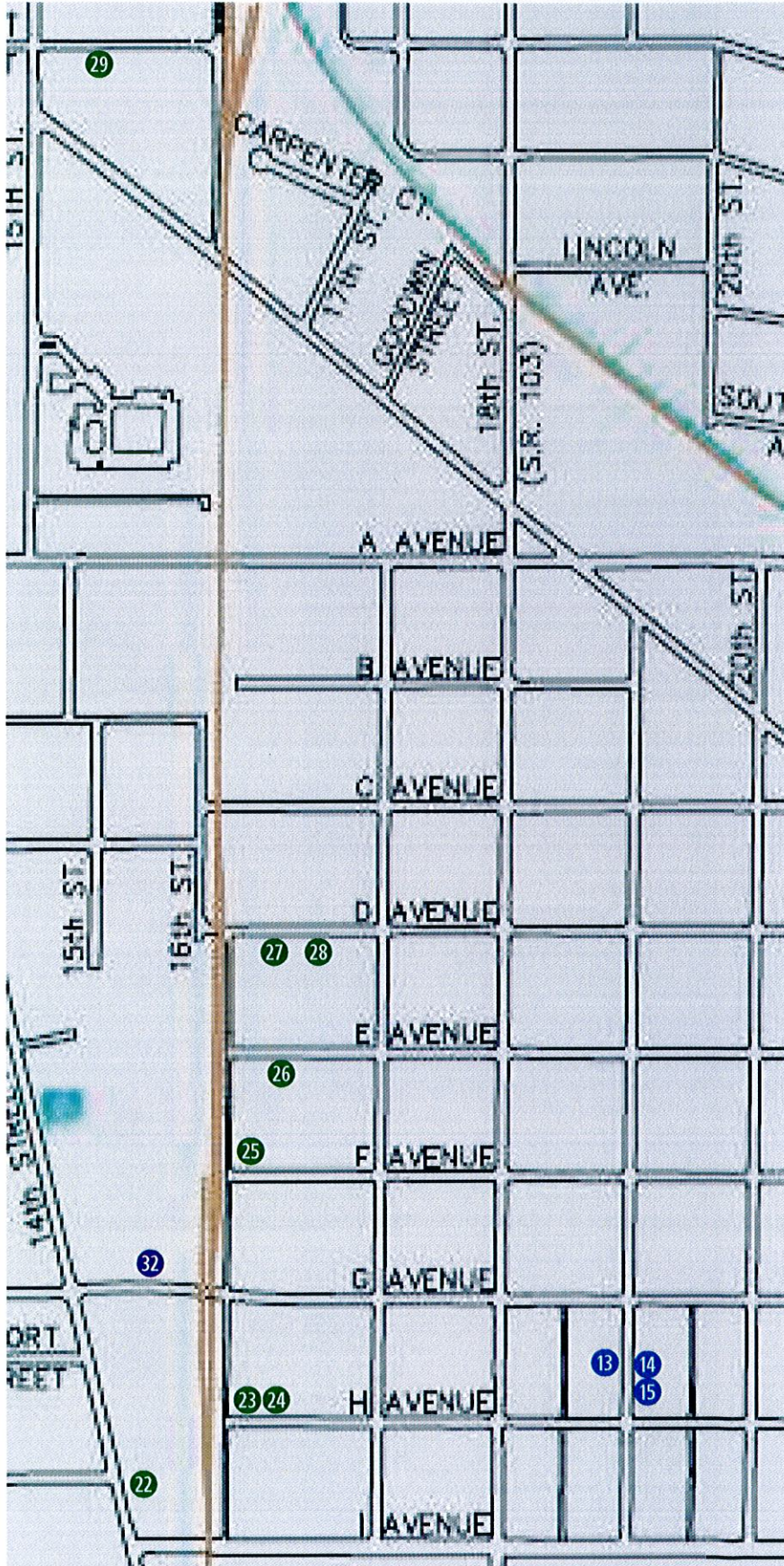
- 20 2386 North Hillsboro Road, New Castle [Hillsboro] (Interlocal CAP)
- 34 341 North 10th Street, Middletown (Henry County RDC)
- 35 251 North 8th Street, Middletown (Henry County RDC)

Concentrated Neighborhood Focus – Belmont



- ① 2923 A Avenue (Westminster)
- ② 2820 B Avenue (Westminster)
- ③ 2918 C Avenue (Westminster)
- ④ 3007 C Avenue (Westminster)
- ⑤ 3030 C Avenue (Westminster)
- ⑥ 1007 South 28th Street (Westminster)
- ⑦ 2914 D Avenue (Westminster)
- ⑧ 3025 D Avenue (Westminster)
- ⑨ 1104 South 28th Street (Westminster)
- ⑩ 1110 South 30th Street (Westminster)
- ⑪ 2619 Plum Street (Interlocal CAP)

Concentrated Neighborhood Focus – Bike and Pedestrian Path



29 1511 Walnut Street
(Healthy Communities)

27 1607 D Avenue
(Healthy Communities)

28 1623 D Avenue
(Healthy Communities)

26 1609 E Avenue
(Healthy Communities)

25 1600 F Avenue
(Healthy Communities)

32 1414 G Avenue
(Henry County RDC)

23 1602 H Avenue
(Healthy Communities)

24 1604 H Avenue
(Healthy Communities)

22 1346 South 14th Street
(Healthy Communities)

13 1417 South 19th Street
(Interlocal CAP)

14 1420 South 19th Street
(Interlocal CAP)

15 1420 South 19th Street
(Interlocal CAP)

New Castle, Indiana

Strategic Framework

2013-2028



Our community appreciates its rich history and stands ready for the future. Through visioning what can be, strategic planning, and collaborative partnerships, we strive to achieve a City that is safe, welcoming, and ready to embrace opportunities that will make the city and surrounding area forever better, beautiful and green. Every New Castle resident is encouraged to become an active participant in our government in specific and our community at large.

CITY VISION

Our citizens and visitors are safe, are welcome, and know there is solid strategic planning to ensure a good today and a better tomorrow for the entire city and surrounding area.

“In the future, we want more diversity and greater quality in our industrial and business offerings, including housing corporate headquarters.

We want a spectrum of shopping choices, offering specialty and general wares so that we really can shop in our own city.

We do want a vibrant downtown, and we want every neighborhood being respected and respecting, caretaking their own property and that of their neighbors, all feeling safe.

We want our schools reflecting rigor and relevance, giving appropriate support to all our children.

We want strong leadership in our government, businesses, social service organizations, and in our churches.

We want compliant infrastructure. We want a full-service center to attend to the diverse needs of our diverse community.

We want to be known for our attractive recreational areas that serve citizens of all ages, and draw people from other geographic areas.

We also want our abandoned rails to become trails sooner than later.

We want to continue our legacy in the arts, homage to beauty, for our children and their children.”

This “want” list was first generated at a 2009 public forum, hosted by HOPE Initiative. Five public forums have since been held to ensure public input on this publication.

2013 – 2015

- ✓ Systemize beautification through education, expectation, and “hand-up”: Enforce ordinances that ensure cleanliness, mown yards, safe housing, and appropriate waste disposal
- ✓ Streetscape and Artscape (Murals and Signage)
- ✓ Manage safe, beautiful parks
- ✓ Complete Broad Street revitalization including occupation of the Jennings Building
- ✓ Maintain strong economic development program, soliciting diversity in employment opportunities
- ✓ Utilize TIFF and various other fund sources to attract new and diverse business options, employment opportunities
- ✓ Housing Assessment completed
- ✓ Unsafe Structure Ordinance Updated
- ✓ Increase varied marketing efforts on behalf of the city and surrounding area
- ✓ Senior Citizens Center re-established
- ✓ Civic Center Clearing House
- ✓ Wellness Center functioning
- ✓ Install lighting in oft-traveled areas
- ✓ Install signage at six primary city entries
- ✓ Install litter and street signage
- ✓ Enhance educational offerings, PreK-12, post-secondary, and collegiate Danielson/IU East, IVY Tech, BSU
- ✓ Secure tenant for EDC spec building
- ✓ Increased code enforcement personnel
- ✓ Maintain safety for and from animals

2013 – 2018

- ✓ State of the art Early Education Center
- ✓ Landscaped gathering spaces at Jennings Building and Justice Square
- ✓ Sidewalks/bike trails installed, connecting to parks, to our “rails-to-trails” and to schools
- ✓ With County, jail issue is addressed
- ✓ Green spaces throughout city, including a “Victory Garden” and an orchard
- ✓ CSO system into compliance/maintained
- ✓ Appropriate housing rehabilitation and/or housing development begun
- ✓ Enhanced educational and recreational opportunities for youth
- ✓ Enhance public transportation opportunities
- ✓ Establish monitoring system to better ensure fidelity to strategic plan: Host bi-annual forums, taking the community pulse, i.e. How are we doing as a safe, invitational city?
- ✓ Maintain strong communication with County/State governments to better insure partnerships on projects in common
- ✓ Partner with other entities to ensure the most able future: Education, business, neighboring communities & civic organizations

2016 – 2028

- ✓ Education and economics realities command regional/national respect
- ✓ Area is a national draw for arts events, sport opportunities & trails program

New Castle has many wonderful assets, other than being blessed with a gorgeous topography: valleys, hills, natural springs, ponds...a river. These assets are treasures for the residents and lures to tourists, new businesses and new residents. With location, location, location being a value, New Castle is fortunate to be in the center of an education triangle: Ball State University to the north, Anderson University to the northwest, Earlham College to the east, satellites of Purdue, Indiana State, and Indiana University southwest of us, and our own Danielson Center/IU East inside the city itself. A new Ivy Tech College opened this year, providing excellent educational opportunities inside the county. State Road 3 runs through the city, as do State Road 103 and State Road 38. State Road 36 to our north and Interstate 70 to our south are literally under ten minutes to our downtown; one can be to Interstate 69 within half an hour. The newest road in town is Garner Street which connects State Road 3 to the hospital area, making quicker access for emergency care and visiting hospitalized friends and/or relatives. A new shovel-ready spec building exists in the industrial park. Eight beautifully maintained parks and a rails-to-trails program invite all to enjoy nature at its finest.

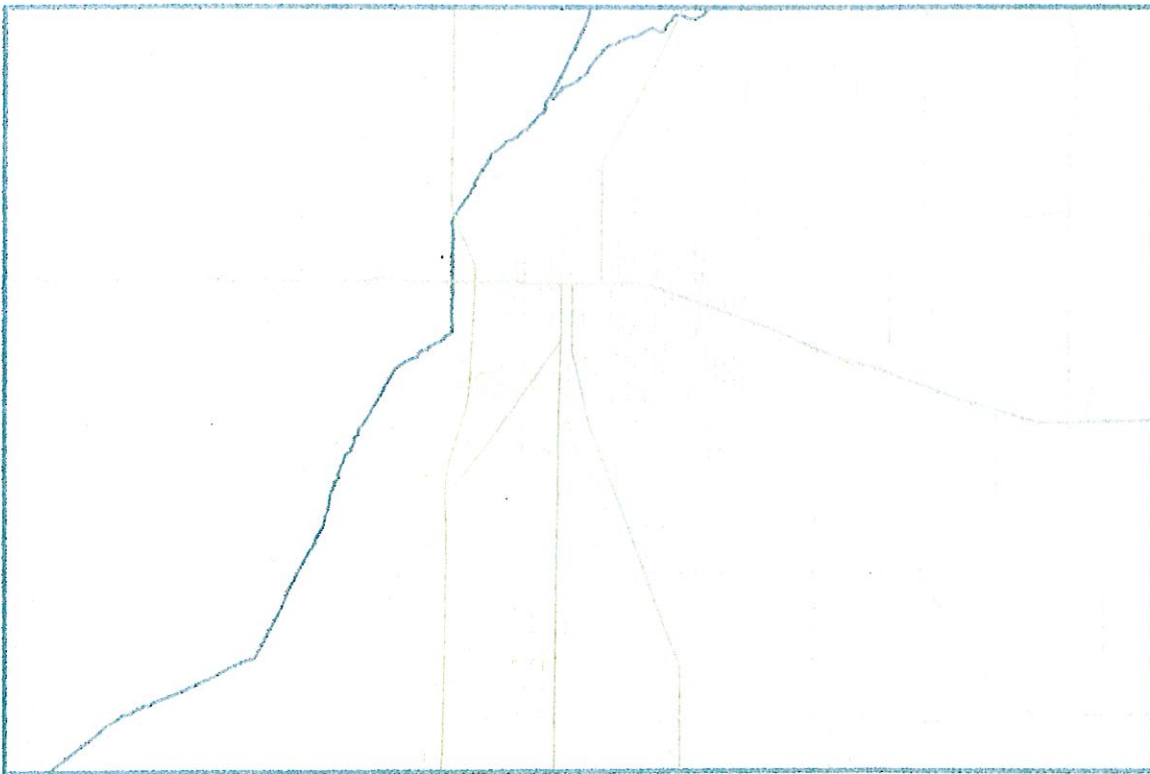


Mayor Greg York
Municipal Offices
227 N. Main St.
New Castle, IN 47362

765-529-9505

City Council
Sandy Bertram
Jeff Hancock
Jimmy Kidd
Mark Koger
Mary Malone
Rex Peckinpaugh
Vaughn Reid, III

NEW CASTLE bicycle + pedestrian master plan



executive summary

may 19, 2014

presented by:



table of contents



PROJECT BACKGROUND

Background	Page 1
Need for the Plan	Page 2
Target Users	Page 2
Goals and Objectives	Page 3
Scope of the Plan	Page 3
Project Schedule	
Project Approach	

PUBLIC INVOLVEMENT PROCESS

Meeting Schedule	Page 4
Summary of Meetings	Page 5

INVENTORY AND ANALYSIS

Overall Scope and Inventory Map	
Bikeability Conditions	Page 6
Bicycle Suitability Analysis Map	
Pedestrian Walkability Conditions	Page 7
Pedestrian Walkability Analysis Map	

FINAL PLAN

Types of Bicycle and Pedestrian Facilities	
Greenway and Bicycle Facility Plan	
Priority Routes and Phasing	Page 8
Total Miles of Bicycle Facilities Summary	Page 12
Standards	Page 13
Funding	Page 42
Cost Summary	
Recommendations and Options	Page 48



PROJECT BACKGROUND

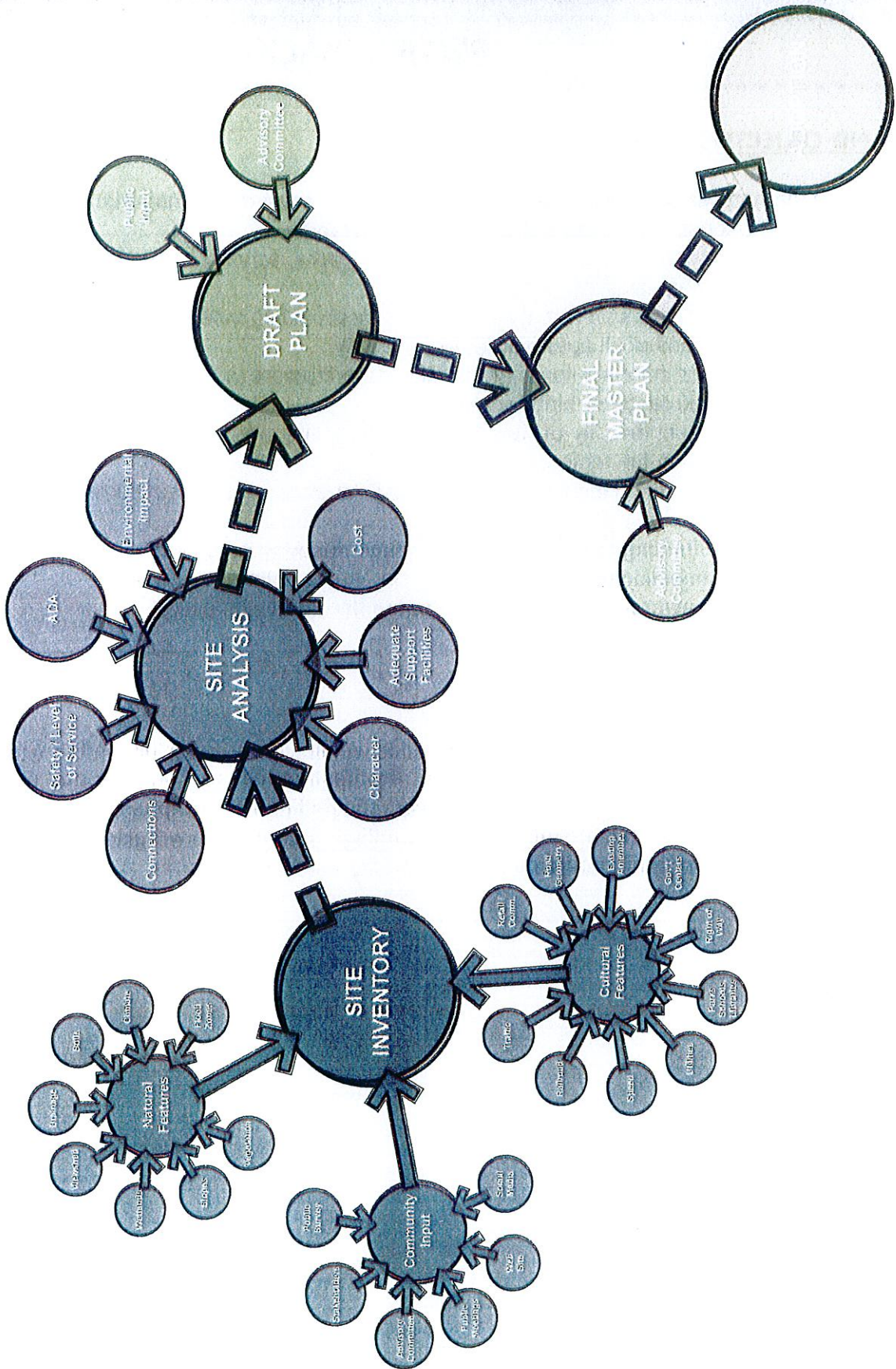


GOALS AND OBJECTIVES

1. Increase the number of people walking and bicycling for everyday transportation purposes such as commuting to work, to school and running errands.
2. Enhance community connections to neighborhoods, parks, schools, businesses, retail and dining, and government facilities.
3. Increase the number of people that exercise daily by providing safe walking and biking experiences for citizens of all ages and levels of ability.
4. Provide guidance and priorities for implementing infrastructure to support walking and bicycling with a broad range of funding and support.
5. Increase eco-tourism in the City of New Castle by attracting people that are looking for recreational activities in the region.
6. Increase the quality of life in the City of New Castle in an effort to retain current citizens and attract new citizens.
7. Be ready for future funding opportunities when they present themselves.
8. Create regional connections to county facilities and surrounding communities.
9. Provide community awareness of motorists sharing the road with cyclists.

SCOPE OF THE PLAN

The plan will concentrate on walking and bicycling facilities within Henry Township and how to connect them with the Raintree Trails and Greenways System. Routes that connect schools and parks within Henry Township will be given the most priority. Detailed cost estimates and phasing will be provided for each facility. Development Standards and possible funding opportunities will also be included for all routes. Public input will be sought throughout the master plan.





PUBLIC INVOLVEMENT PROCESS

MEETING SCHEDULE

<u>DESCRIPTION:</u>	<u>DATE:</u>
Kick-off Meeting	January 10, 2014
Government Stakeholder Meetings	January 29, 2014
Private Organizations Stakeholder Meetings	January 29, 2014
Retail, Dining, and Major Employers Stakeholder Meetings	January 29, 2014
Public Open House	January 29, 2014
Advisory Committee Meeting - Inventory and Analysis Review	March 3, 2014
Healthy Communities Annual Meeting	March 7, 2014
Advisory Committee Meeting - Draft Plan Review	April 2, 2014
Public Presentation - Draft Plan Presentation	April 9, 2014
Advisory Committee Meeting - Final Plan Review	May 7, 2014
Public Presentation (City Council) - Final Master Plan Presentation	May 19, 2014

PUBLIC INVOLVEMENT PROCESS



SUMMARY OF MEETINGS

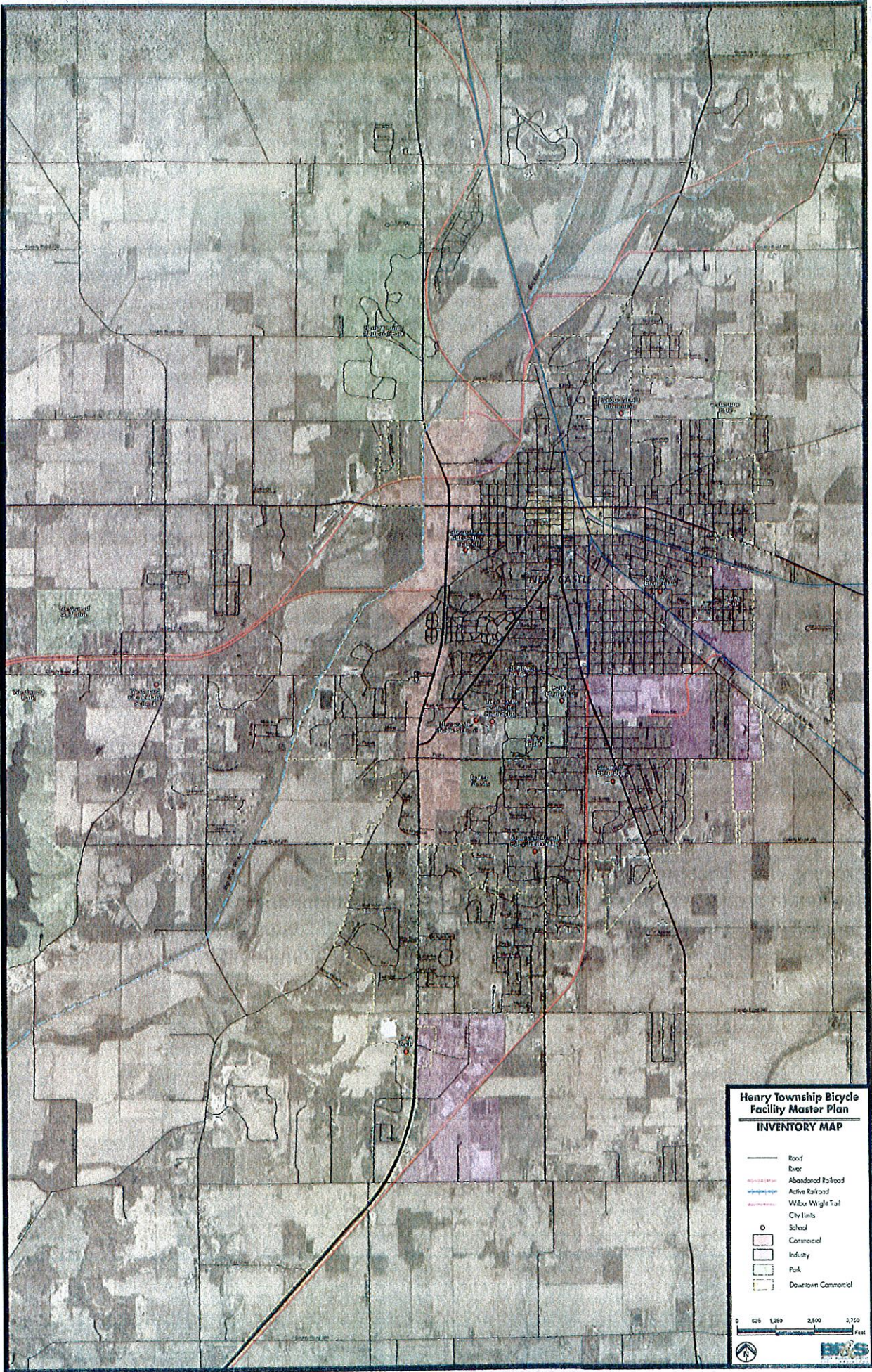
In an effort to get as much input from as many different members of the community as possible there were several different types of meetings provided throughout the course of the project.

There were a series of 4 advisory committee meetings held to review the major stages of the plan process. These planning sessions consisted of meetings with city staff and selected members of the community. See Appendix "A" for a list of the New Castle Bicycle and Pedestrian Master Plan Advisory / Steering Committee and meeting minutes from each meeting.

Three stakeholder meetings were held during the inventory and analysis stage of the project. The groups were split into government stakeholders; private organizations; and local retail, dining, and major employers. See Appendix "A" for a list of the stakeholders invited and meeting minutes from each stakeholder meeting.

During the inventory and analysis phase of the project the city held a public open house at the New Castle - Henry County Public Library to give as much opportunity for the public to express its desires and wants for the project. The open house allowed for citizens to come and go at their leisure and on their schedule. The public was allowed to participate in the process by allowing attendees to place stickers on 2 different boards designed to find out where residents would like to get to and from within the community and the goals and objectives that they felt were most important to the community. Members of the consultant team and city staff were able to interact with the public in "one-on-one" sessions. Interactive boards were placed at the Henry County Hospital, the area's largest employer, for workers to provide input. Survey questions were published in the newspaper and placed on the Healthy Communities of Henry County Facebook page. See Appendix "A" for boards and a summary of comments.

There were two public presentations of the New Castle Bicycle and Pedestrian Master Plan. The first presentation was given on April 9, 2014. This presentation was given while the plan was in a draft stage and the public was encouraged to provide feedback at the meeting. The final presentation of the plan was given on May 19, 2014. See Appendix "A" for a summary of the presentations and comments received.





BIKEABILITY CONDITIONS

During the inventory process it became evident that the City of New Castle is divided by State Road 3 / Memorial Drive and several active railroad systems. Many of the existing roadways are very narrow, but all for except a few main arterials, the traffic volumes are low. There are a few low volume active railroad corridors within the city limits that might be available for a rail with trail development and few areas where the railroad operations are now inactive. Most in city routes will need to use a complete street type of approach to make alternative transportation connections.

The team used the cross sections created as part of the inventory process and analyzed each mid block to see where opportunities were available to gain space for bicycle facilities along roadways. The team looked at the existing lane widths to see if it would be appropriate to narrow them and how much space might be gained from that treatment. Opportunities and constraints were also noted for each mid-block based upon apparent available right-of-way, existing utilities, drainage structures, curb type, distance from street to building, used parking stalls

- a. Measurements of the mid-block geometry of each route along with the average daily traffic, speed limit, and percent of commercial traffic along each route was inserted into a Bicycle Level of Service Calculator (BLOS). The BLOS is a nationally-used measure of on-road bicycle level of comfort based upon a roadway's geometry and traffic conditions.
- b. A map was created that summarizes the existing Bicycle Level of Service (BLOS) conditions by color coding those sections that are more suitable for casual riders and those that are currently more appropriate for expert riders.

The following map illustrates the existing BLOS for the routes studied. A grade of "A" through "B" indicates that the route is suitable for a casual rider. A grade that equals a "C" indicates that the route is borderline suitable for casual riders. A grade of "D" through "F" means that only expert riders would feel comfortable riding the route in its present conditions and that an improvement is needed.

INVENTORY + ANALYSIS



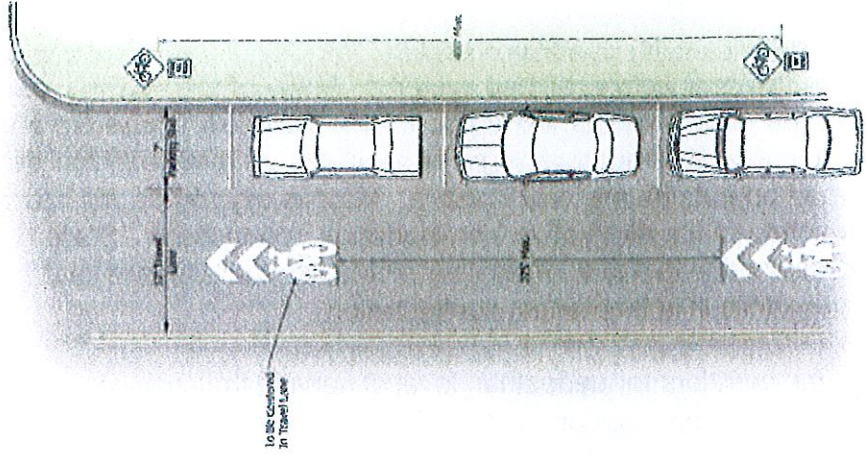
PEDESTRIAN WALKABILITY CONDITIONS

As mentioned previously in the bikeability conditions section, the City of New Castle is divided by State Road 3 / Memorial Drive and several active railroad systems. Many of the existing roadways are very narrow, but all for except a few main arterials, the traffic volumes are low. There are a few low volume active railroad corridors within the city limits that might be available for a rail with trail development and few areas where the railroad operations are now inactive. Most in city routes will need to use a complete street type of approach to make alternative transportation connections. State Road 3 presents the biggest challenge to walkers due to a lack of existing pedestrian facilities and that it is 8 lanes wide. Crossing this corridor is very difficult in its present configuration.

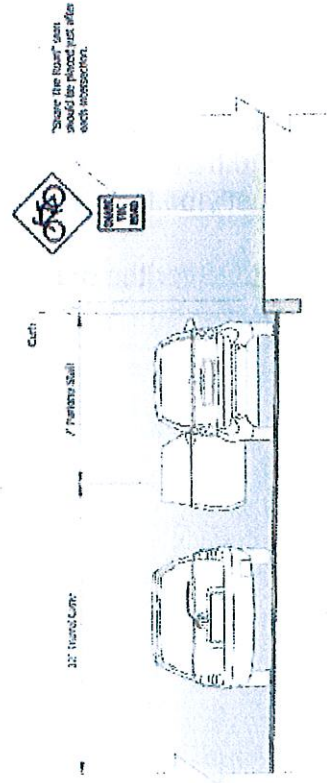
The team analyzed the same corridors for pedestrian level of service that were analyzed for bikeability conditions to see if the corridor would support both biking and walking. Corridors that currently had sidewalks on both side of the streets were deemed as highly walkable, corridors or sections of corridors with a sidewalk located only on one side were deemed borderline walkable, and sections that had sidewalks on neither side of the road were considered not walkable.

A map was then created that summarizes the existing Pedestrian Level of Service (PLOS) conditions by color coding those sections that are more suitable for walking and those that need improvement. Based upon the PLOS map it was determined that most of the downtown area falls into the "green" category and is considered on the high side of walkability. Sections that fell into the C level (borderline walkability) were assigned a yellow color and then D-F level (less walkable) were assigned a red color. The less walkable sections appeared to mostly be located away from the core of the downtown.

The following map illustrates the existing PLOS for the study area.

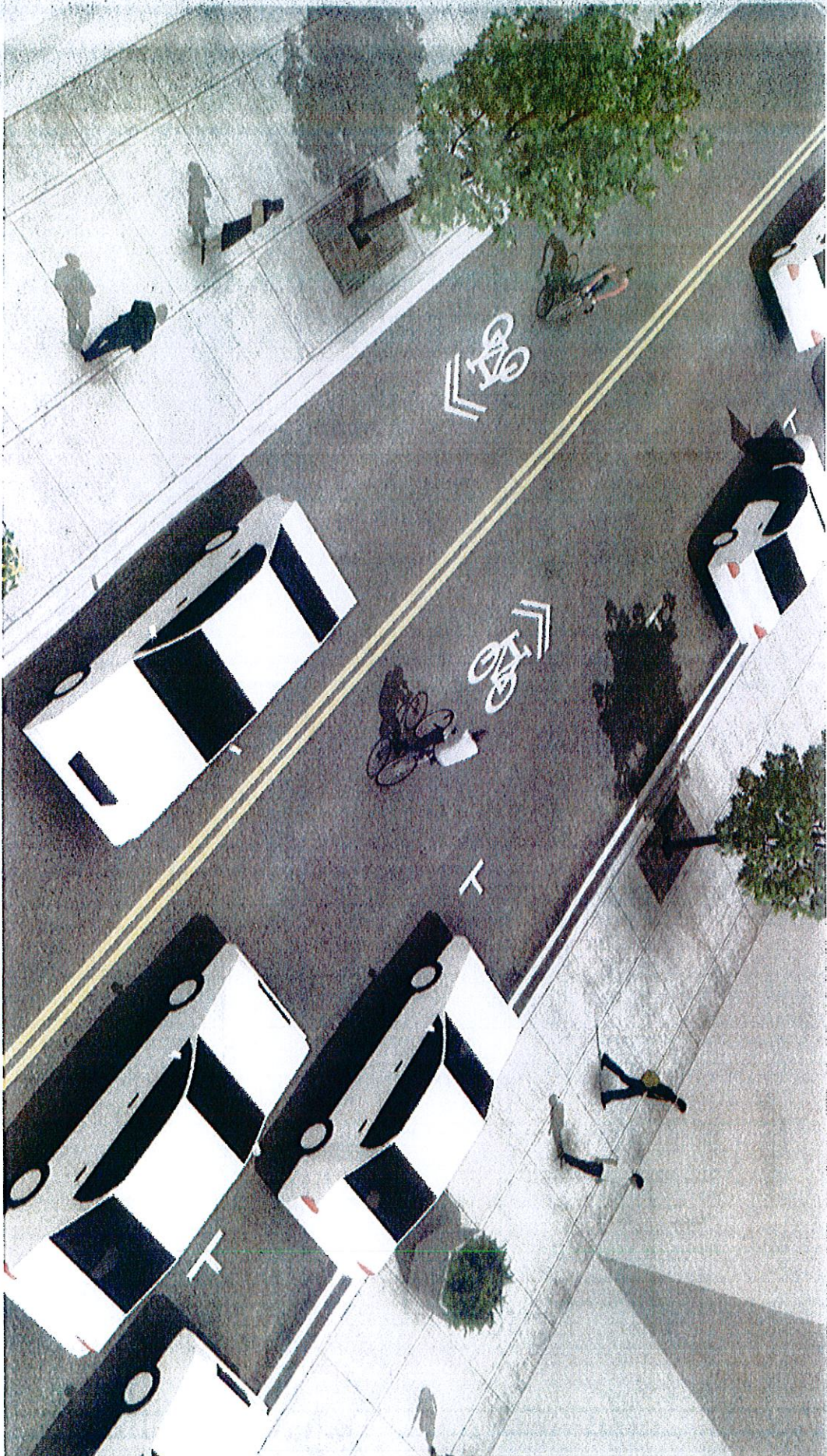


SHARROW DETAIL



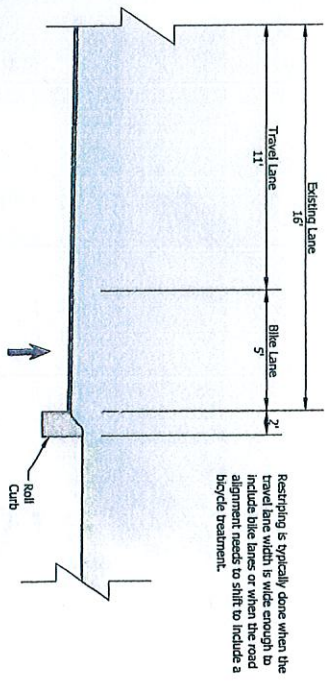
Shared pavement shoulders should be in the center of the roadway to share the road for bicyclists is suggested to use.

SHARED ROADWAY (SHARROW)



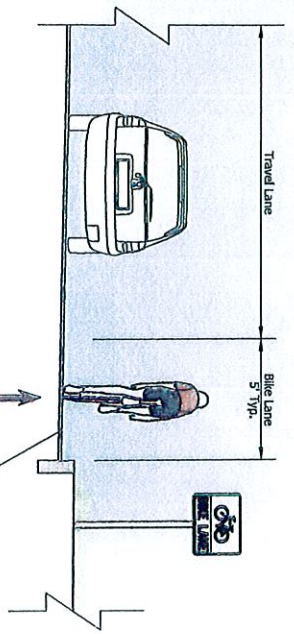
Signing & Marking
Shared Lane Markings





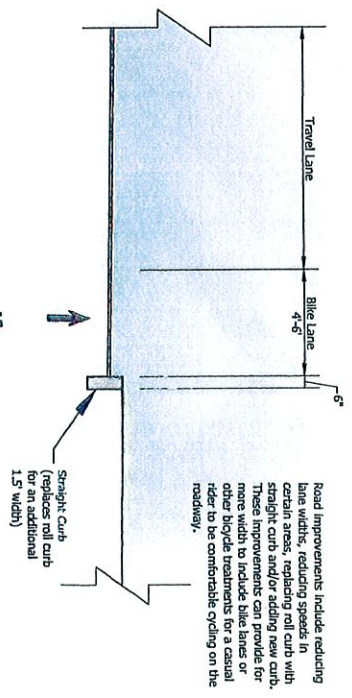
Restriping is typically done when the travel lane width is wide enough to include bike lanes or when the road alignment needs to shift to include a bicycle treatment.

RESTRIPIING
Scale: 1"=5'



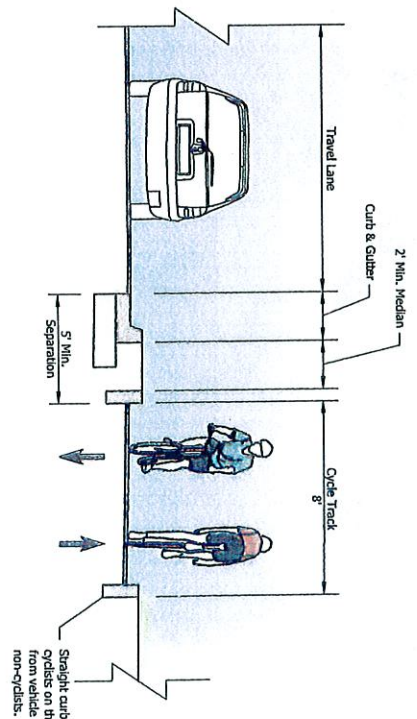
bike lane can be a minimum of 4' wide and a maximum of 6' wide. If bike lanes are alongside parking, 6' wide is desirable due to the car doors opening into the bike lane.

BIKE LANE
Scale: 1"=5'

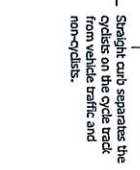


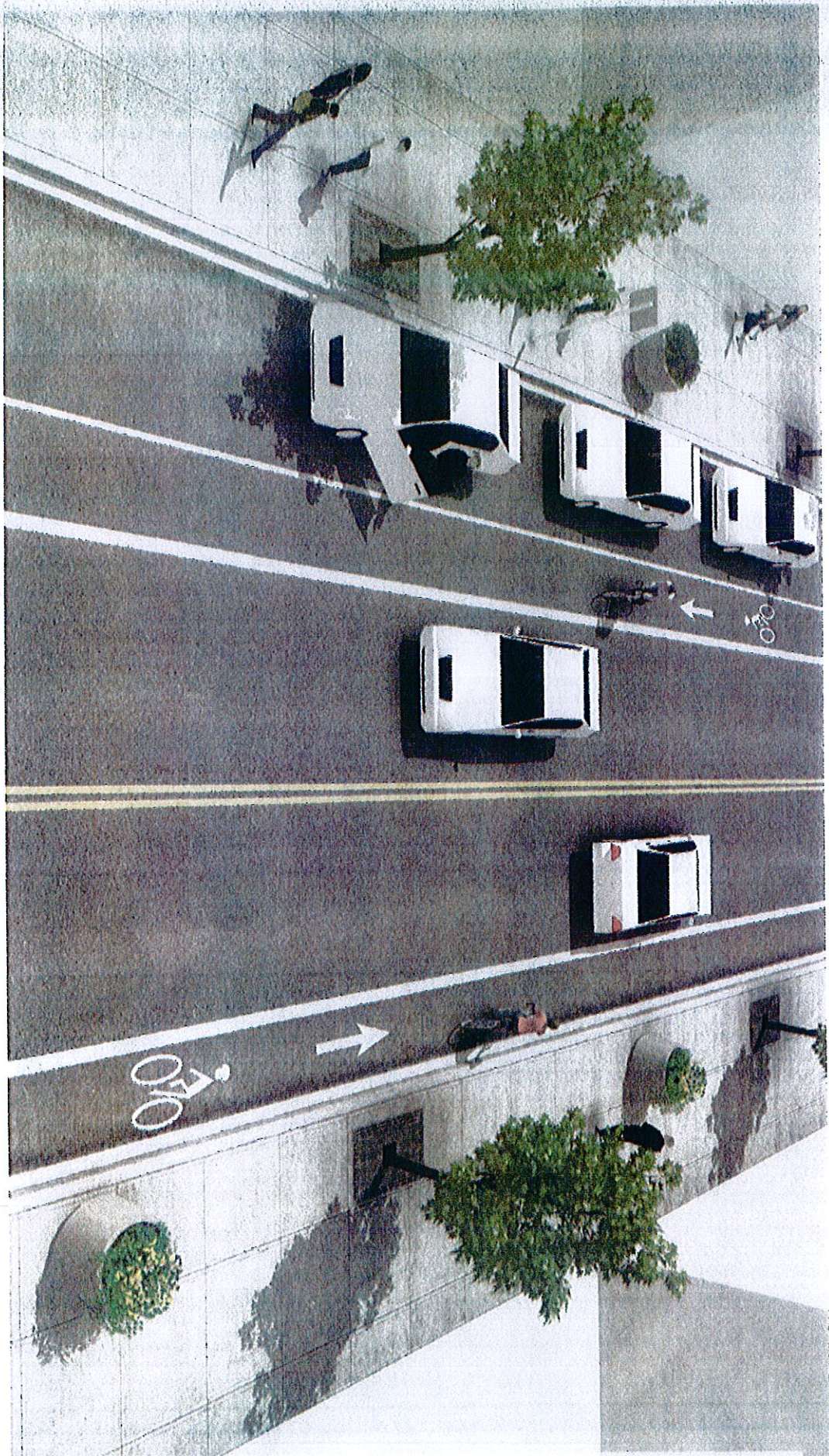
Road improvements include reducing lane widths, reducing speeds, in-line curbs, reducing speeds, in-line curbs, and/or adding new curbs. These improvements can provide for more width to include bike lanes or other bicycle treatments for a casual rider to be comfortable cycling on the roadway.

ROAD IMPROVEMENTS
Scale: 1"=5'



CYCLE TRACK
Scale: 1"=5'





Bike Lanes
Conventional Bike Lanes





Cycle Tracks
Two-Way Cycle Track





PRIORITY ROUTES

The following pages contain a general recommendations on the order that each facility should take priority over other facilities within each category.

In general most shared roadways and bike lanes can be installed for much cheaper than the other types of facilities. Some of these facilities might even be able to be installed by local forces. It was discussed that the county has a striping truck that would allow for certain routes to be installed for the price of material and man hours at less cost than is currently estimated in the cost opinion section of the plan. In this case it may be possible that several of these facilities end up being installed before most of the shared use trails which take considerably more funding and planning time.

When considering which routes to install first, any route that is close to a school or park should be given precedent over other routes.



FINAL PLAN

PRIORITY ROUTES + PHASING

<u>BIKE LANES:</u>	<u>Phasing:</u>
- 14th Street From SR 103 to Michigan St.	2
- 31st Street From Washington St. to Broad St.	11
- Brooks Drive From CR 400 S to Commerce Dr.	8
- Bundy Avenue From SR 3 to 11th St.	3
- Commerce Drive From SR 3 to CR 300 S	6
- CR 200 S / Riley Road From Greensboro Pike to CR 250 E	9
- Executive Drive From SR 3 to Commerce Dr.	7
- Garner Street From Proposed Interurban Trail to Main St.	10
- **I Avenue From 14th St. to 25th St.	5
- Indiana Avenue From SR 3 to 5th St.	5
- Parkview Drive From SR 3 to Ross St.	4
- Washington Street From 16th St. to 20th St.	1

** Optional Facility. Each route bumps up one number.

<u>CYCLE TRACKS:</u>	<u>Phasing:</u>
- ** Cherrywood Avenue From Q Ave. to J Ave.	1
- I Avenue From 14th St. to 25th St.	1

<u>PEDESTRIAN SIDEWALKS:</u>	<u>Phasing:</u>
- 14th Street From Washington St. to Hospital Entrance Drive	6
- 25th Street From Washington St. to Broad St.	10

FINAL PLAN



- Brooks Drive		
From CR 400 S to Commerce Dr.		19
- Bundy Avenue		
From SR 3 to Audubon Rd.		11
- Commerce Drive		
From SR 3 to CR 300 S		17
- CR 200 S / Riley Road		
From Spiceland Rd. to SR 3		15
From SR 3 to Cherrywood Ave.		1
From Cherrywood Ave. to Brentwood Rd.		14
- Executive Drive		
From SR 3 to Commerce Dr.		18
- Indiana Avenue		
From SR 3 to 5th St.		9
- M Avenue		
From Main St. to Roosevelt Ave.		16
- Main Street		
From CR 300 S to Jeffry St.		2
From Jeffry St. to Riley Rd.		20
- Midway Drive		
From Free Rd. to SR 3		5
- New York Avenue		
From SR 3 to 9th St.		8
- Parkview Drive		
From SR 3 to West Entrance School Parking lot		4
- Q Avenue		
From Main St. to Roosevelt Ave.		3
From 14th St. to Cottage Ave.		13
- State Road 3		
From CR 300 S to New York Ave.		12
- Washington Street		
From 14th St. to 16th St.		7

SHARED ROADWAYS: Phasing:

- 9th Street		
From Plum St. to New York Ave.		5
- 11th Street		
From Bundy Ave. to Plum St.		7
- 14th Street		
From Michigan St. to Woodward Ave.		12
- 15th Street		
From Thornburg St. to B Ave.		1



- 25th Street		
From Washington St. to I Ave.		2
- Brentwood Road		
From Riley Rd. to Q Ave.		14
- Garner Street		
From Main St. to 14th St.		4
- I Avenue		
From 25th St. to Grand Ave.		17
- Indiana Avenue		
From 5th St. to 25th St.		16
- M Avenue		
From Ross St. to Cherrywood Ave.		10
- Midway Drive		
From Free Rd. to SR 3		11
- Parkside Drive		
From Ross St. to Main St.		9
- Plum Street		
From 11th St. to 9th St.		6
- Q Avenue		
From Main St. to Cottage Ave.		13
- Ross Street		
From Trojan Ln. to Parkview Dr.		8
- Thornburg Street		
From 9th St. to 15th St.		15
- Washington Street		
From 14th St. to 16th St.		3

SHARED-USE PATHS: Phasing:

- Big Blue River Corridor		
From Honey Bee Line to CR 100 S		14
- Conrail RR Corridor		
From CR 275 W to SR 3		12
From SR 3 to Wilbur Wright Trail		11
- CR 300 S + Walmart Spur		
From Walmart Parking Lot to Main St.		8
- Crown Equipment Property		
From I Ave. to Q Ave.		4
- Hillsboro Road		
From Washington St. to CR 150 N		5
- Honey Bee Line RR Corridor		
From Conrail Corridor to SR 3		13
- Interurban RR Corridor		
From Garner St. to CR 200 N		10



- Nickel Plate RR Corridor	
From CR 500 S to Riley Rd.	5
From Riley Rd. to I Ave.	4
From I Ave. to B Ave.	3
- Osborne Park	
From Hillsboro Rd. to Alabama St.	7
- State Road 3	
From CR 300 S to Trojan Ln.	17
From Trojan Ln. to Indiana Ave.	15
From Indiana Ave. to Wittenbreaker Ave.	16
- Trojan Lane	
From SR 3 to Ross St.	6
- Washington Street	
From 20th St. to Hillsboro Rd.	2
- Wilbur Wright Trail Extension (Phase 2)	1
- YMCA Property	9

TOTAL DISTANCE OF BICYCLE + PEDESTRIAN FACILITIES SUMMARY

Bike Lanes:	<u>9.7 miles</u>
Cycle Track:	<u>1.0 miles</u>
Sidewalks:	<u>13.2 miles</u>
Shared Roadways:	<u>8.8 miles</u>
Shared Use Paths:	<u>21.3 miles</u>

NEW CASTLE BICYCLE AND PEDESTRIAN MASTER PLAN

PEDESTRIAN SIDEWALK:

Brooks Drive From CR 400 S to Commerce Dr.	<u>\$166,500.00</u>
Commerce Drive From SR 3 to CR 300 S	<u>\$188,900.00</u>
Executive Drive From SR 3 to Commerce Dr.	<u>\$103,900.00</u>
State Road 3 From CR 300 S to New York Ave.	<u>\$766,200.00</u>
Main Street From CR 300 S to Riley Rd.	<u>\$249,200.00</u>
CR 200 S / Riley Road	<u>\$800,833.00</u>
Q Avenue	<u>\$285,850.00</u>
Midway Drive From Free Rd. to SR 3	<u>\$117,100.00</u>
Parkview Drive From SR 3 to West Entrance School Parking lot	<u>\$92,400.00</u>
Bundy Avenue	<u>\$101,000.00</u>
Indiana Avenue From SR 3 to 5th St.	<u>\$63,450.00</u>
New York Avenue From SR 3 to 9th St.	<u>\$119,600.00</u>
25th Street From Washington St. to Broad St.	<u>\$171,200.00</u>
Washington Street From 14th St. to 16th St.	<u>\$61,800.00</u>
14th Street From Washington St. to Hospital Entrance Drive	<u>\$92,250.00</u>

NEW CASTLE BICYCLE AND PEDESTRIAN MASTER PLAN

BIKE LANES:

Brooks Drive From CR 400 S to Commerce Dr.	<u>\$22,300.00</u>
Commerce Drive From SR 3 to CR 300 S	<u>\$26,000.00</u>
Executive Drive From SR 3 to Commerce Dr.	<u>\$15,125.00</u>
CR 200 S / Riley Road From Greensboro Pike to CR 250 E	<u>\$1,198,620.00</u>
Bundy Avenue From SR 3 to 11th St.	<u>\$280,460.00</u>
Parkview Drive From SR 3 to Ross St.	<u>\$391,340.00</u>
Indiana Avenue From SR 3 to 5th St.	<u>\$10,125.00</u>
31st Street From Washington St. to Broad St.	<u>\$199,150.00</u>
Garner Street From Big Blue River to Main St.	<u>\$126,300.00</u>
14th Street From Garner St. to Michigan St.	<u>\$132,500.00</u>
Washington Street From 16th St. to 20th St.	<u>\$12,125.00</u>

NEW CASTLE BICYCLE AND PEDESTRIAN MASTER PLAN

CYCLE TRACK:

I Avenue From 14th St. to 25th St.	<u>\$1,154,260.00</u>
Cherrywood Avenue From Q Ave. to J Ave.	<u>\$783,550.00</u>

NEW CASTLE BICYCLE AND PEDESTRIAN MASTER PLAN

SHARED ROADWAY:

Midway Drive From Free Rd. to SR 3	<u>\$11,125.00</u>
Brentwood Road From Riley Rd. to Q Ave.	<u>\$12,302.00</u>
Q Avenue From Ross St. to Cottage Ave.	<u>\$30,400.00</u>
Ross Street From Trojan Ln. to Parkview Dr.	<u>\$8,775.00</u>
M Avenue From Ross St. to Cherrywood Ave.	<u>\$12,300.00</u>
I Avenue From 25th St. to Grand Ave.	<u>\$10,300.00</u>
25th Street From Washington St. to I Ave.	<u>\$269,004.73</u>
11th Street From Bundy Ave. to Plum St.	<u>\$10,450.00</u>
Plum Street From 11th St. to 9th St.	<u>\$6,250.00</u>
9th Street From Plum St. to Thornburg St.	<u>\$14,025.00</u>
Thornburg Street From 9th St. to 15th St.	<u>\$31,706.00</u>
Lawton Street From Main St. to 14th St.	<u>\$8,000.00</u>
Indiana Avenue From 5th St. to 25th St.	<u>\$104,917.62</u>
14th Street From Hospital Entrance Drive to Woodward Ave.	<u>\$43,832.60</u>
15th Street From Thornburg St. to B Ave.	<u>\$15,125.00</u>
Washington Street From 14th St. to 16th St.	<u>\$4,750.00</u>

NEW CASTLE BICYCLE AND PEDESTRIAN MASTER PLAN

SHARED USE PATH:

Nickel Plate RR Corridor	
From CR 500 S to Riley Rd.	<u>\$1,388,130.00</u>
From Riley Rd. to I Ave.	<u>\$529,290.00</u>
From I Ave. to B Ave.	<u>\$213,000.00</u>
CR 300 S + Walmart Spur	<u>\$576,780.00</u>
From Walmart Parking Lot to Main St.	
State Road 3	
From CR 300 S to Trojan Ln.	<u>\$1,453,100.00</u>
From Trojan Ln. to Indiana Ave.	<u>\$816,620.00</u>
From Indiana Ave. to Wittenbreaker Ave.	<u>\$483,000.00</u>
Trojan Lane	<u>\$769,120.00</u>
From SR 3 to Ross St.	
Crown Equipment Property	<u>\$385,060.00</u>
From I Ave. to Q Ave.	
Big Blue River Corridor	<u>\$192,611.50</u>
From Honey Bee Line to CR 100 S	
Conrail RR Corridor	
From CR 275 W to SR 3	<u>\$1,707,520.00</u>
From SR 3 to Wilbur Wright Trail	<u>\$579,270.00</u>
Honey Bee Line RR Corridor	<u>\$937,920.00</u>
From Conrail Corridor to SR 3	
Washington Street	<u>\$358,120.00</u>
From 20th St. to Hillsboro Rd.	
Osbourne Park	<u>\$188,790.00</u>
From Hillsboro Rd. to Alabama St.	
Hillsboro Road	<u>\$405,840.00</u>
From Washington St. to CR 150 N	
YMCA Property	<u>\$422,920.00</u>
Interurban RR Corridor	<u>\$1,418,480.00</u>
From Garner St. to CR 200 N	



RECOMMENDATIONS AND OPTIONS

Route Options

- A. A shared use path is shown along Cherrywood Avenue from Riley Road to 14th Street. This route assumes that the City can acquire the land from the railroad which has started pulling up tracks. The shared use path is the best option due to the park like setting for users and the separation from vehicular traffic. Should the City have a difficult time acquiring the land from the railroad, then there is an option to install a Cycle Track from Q Avenue to 14th Street. This would still not solve the problem of connecting from Riley Road to Q Avenue and it may be necessary to install sidewalk and widen the roadway for bike lanes. It would also create a difficult intersection for the Cycle Track users at Q Avenue (transition from Bike Lane on both sides to Cycle Track on one side of the road).
- B. A Cycle Track is shown along the North Side of I Avenue from 16th Street to 25th Street. This treatment creates the best solution for not having to cross bicyclists mid-block for the shared use path shown along 16th Street and Cherrywood Avenue. It would also avoid a mid-block crossing of cyclists at 25th Street. However, an option to this treatment would be bike lanes along I Avenue.

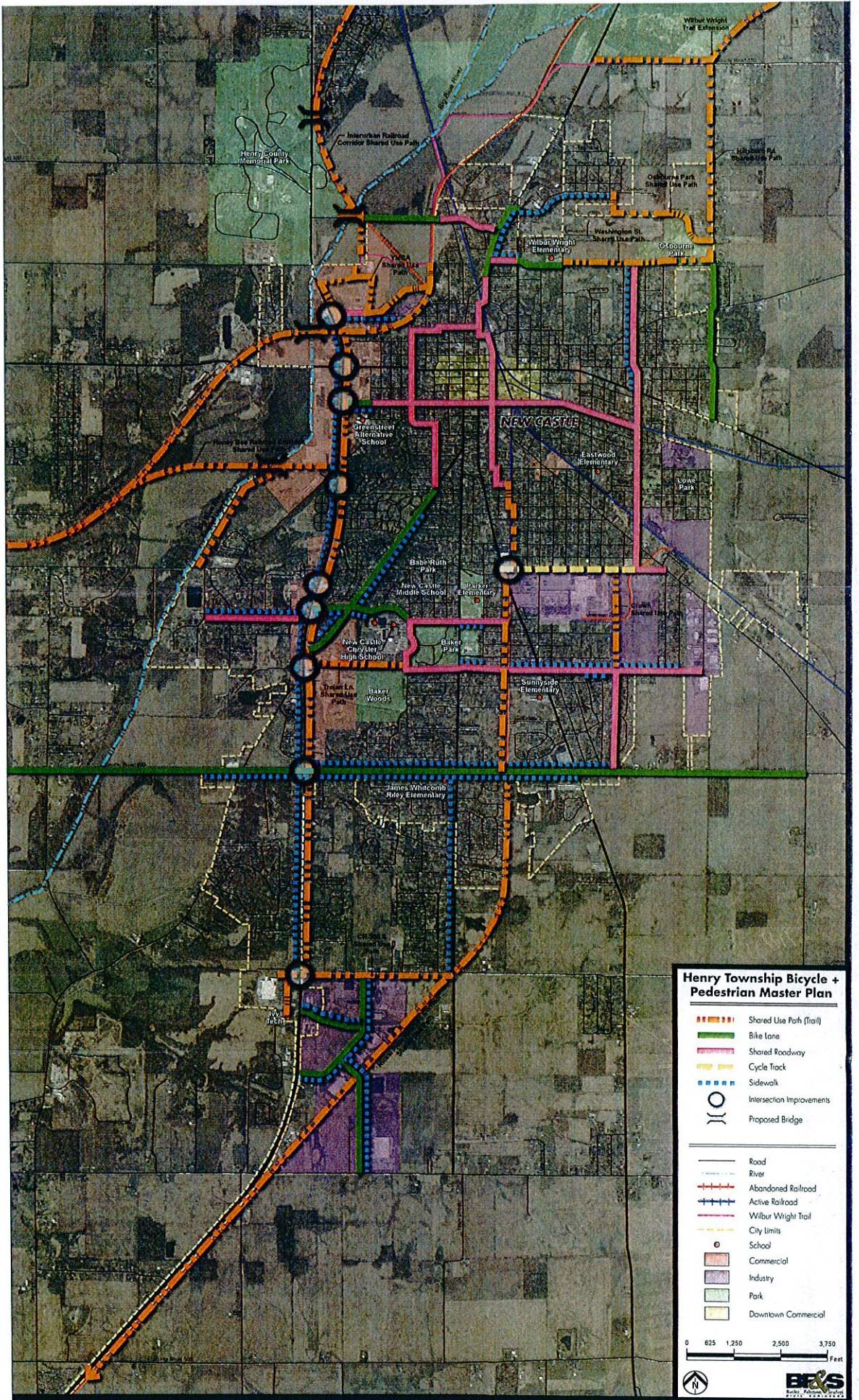
Land Acquisition

It is recommended that in order to speed up project time lines and to make sure that opportunities are not missed, any available land within the area of the proposed routes be acquired as soon as possible by the municipality.

Development

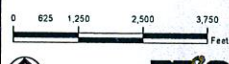
These plans are intended as guide map to the locations and development of the bicycle network. They are not intended to be used as construction plans. A qualified engineer and / or landscape architect should help guide the installation of the facilities. For example, while the proposed cross sections and standards do give considerable guidance regarding installation of the shared roadways and bike lanes, it would be advisable to have someone develop a simple striping and/ or widening plan to help guide local forces or a contractor on how to install a facility along a particular route even though these facilities seem to be considerably more simple than a cycle track or shared use path that are proposed. Each intersection treatment presents its own unique set of circumstances and would be difficult to fully address in a master plan.

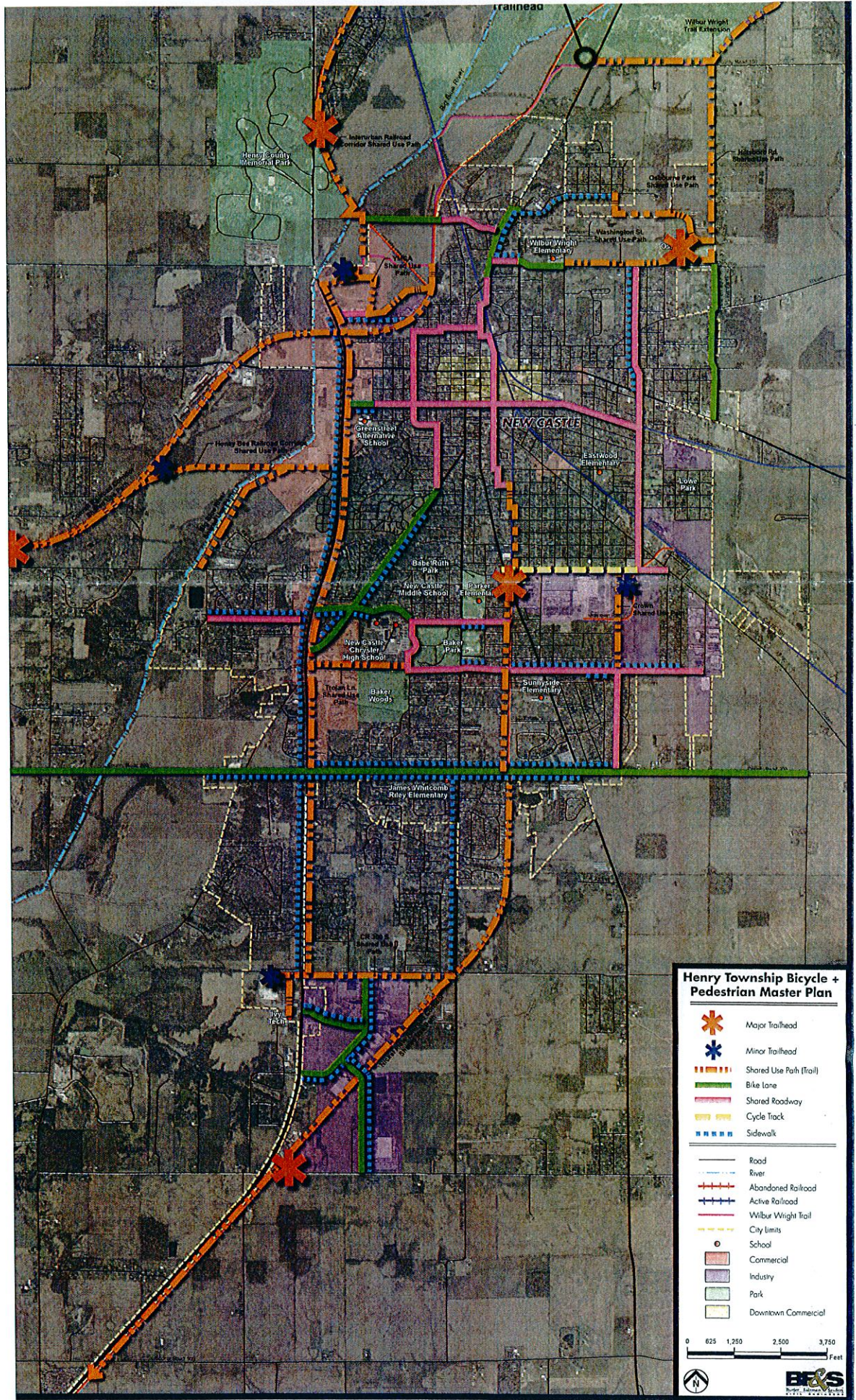




Henry Township Bicycle + Pedestrian Master Plan

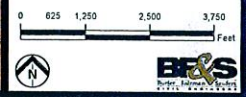
- Shared Use Path (Trail)
 - Bike Lane
 - Shared Roadway
 - Cycle Track
 - Sidewalk
 - Intersection Improvements
 - Proposed Bridge
-
- Road
 - River
 - Abandoned Railroad
 - Active Railroad
 - Wilbur Wright Trail
 - City Limits
 - School
 - Commercial
 - Industry
 - Park
 - Downtown Commercial

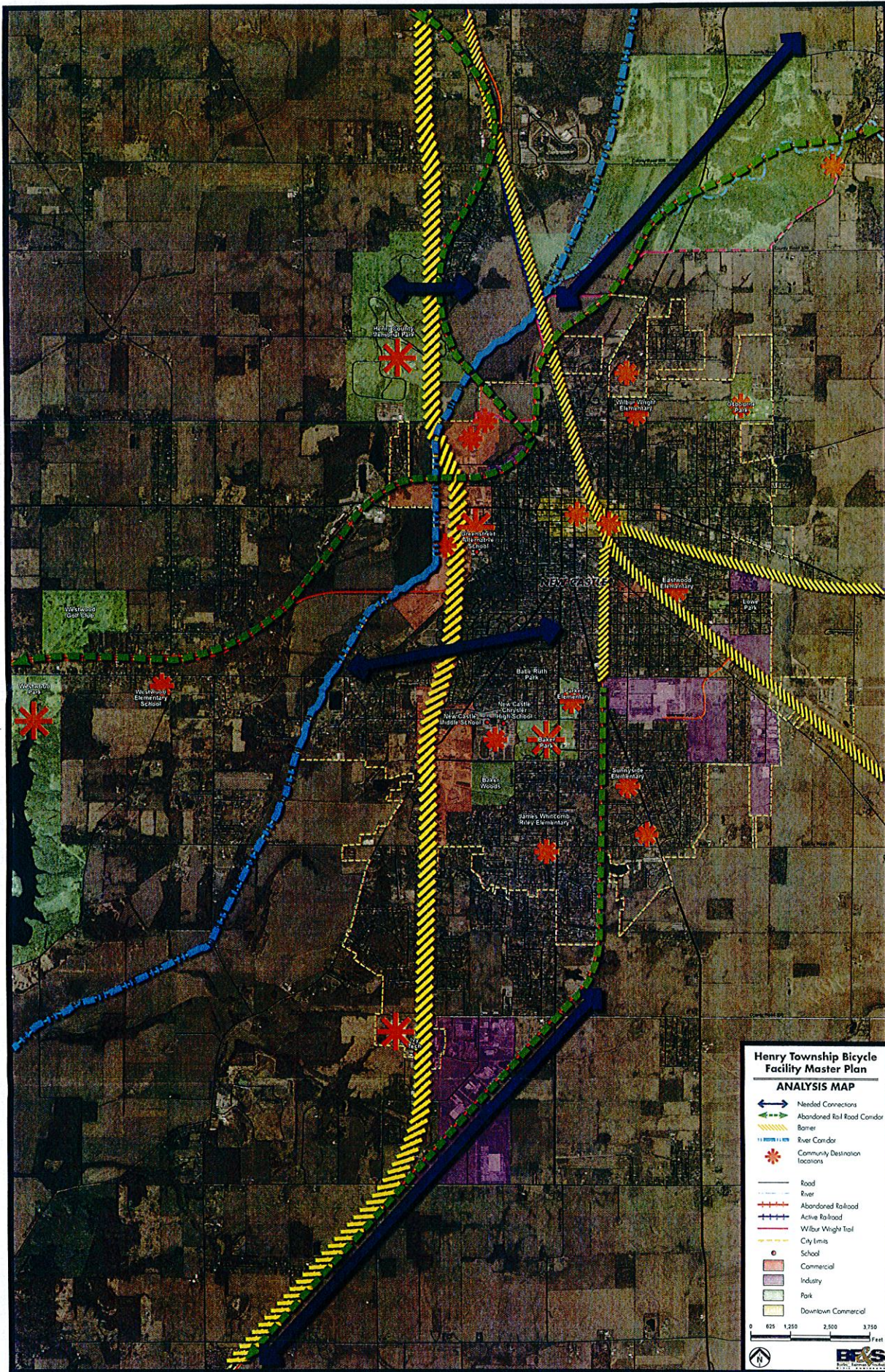




Henry Township Bicycle + Pedestrian Master Plan

- Major Trailhead
 - Minor Trailhead
 - Shared Use Path (Trail)
 - Bike Lane
 - Shared Roadway
 - Cycle Track
 - Sidewalk
-
- Road
 - River
 - Abandoned Railroad
 - Active Railroad
 - Wilbur Wright Trail
 - City Limits
 - School
 - Commercial
 - Industry
 - Park
 - Downtown Commercial





Henry Township Bicycle Facility Master Plan
ANALYSIS MAP

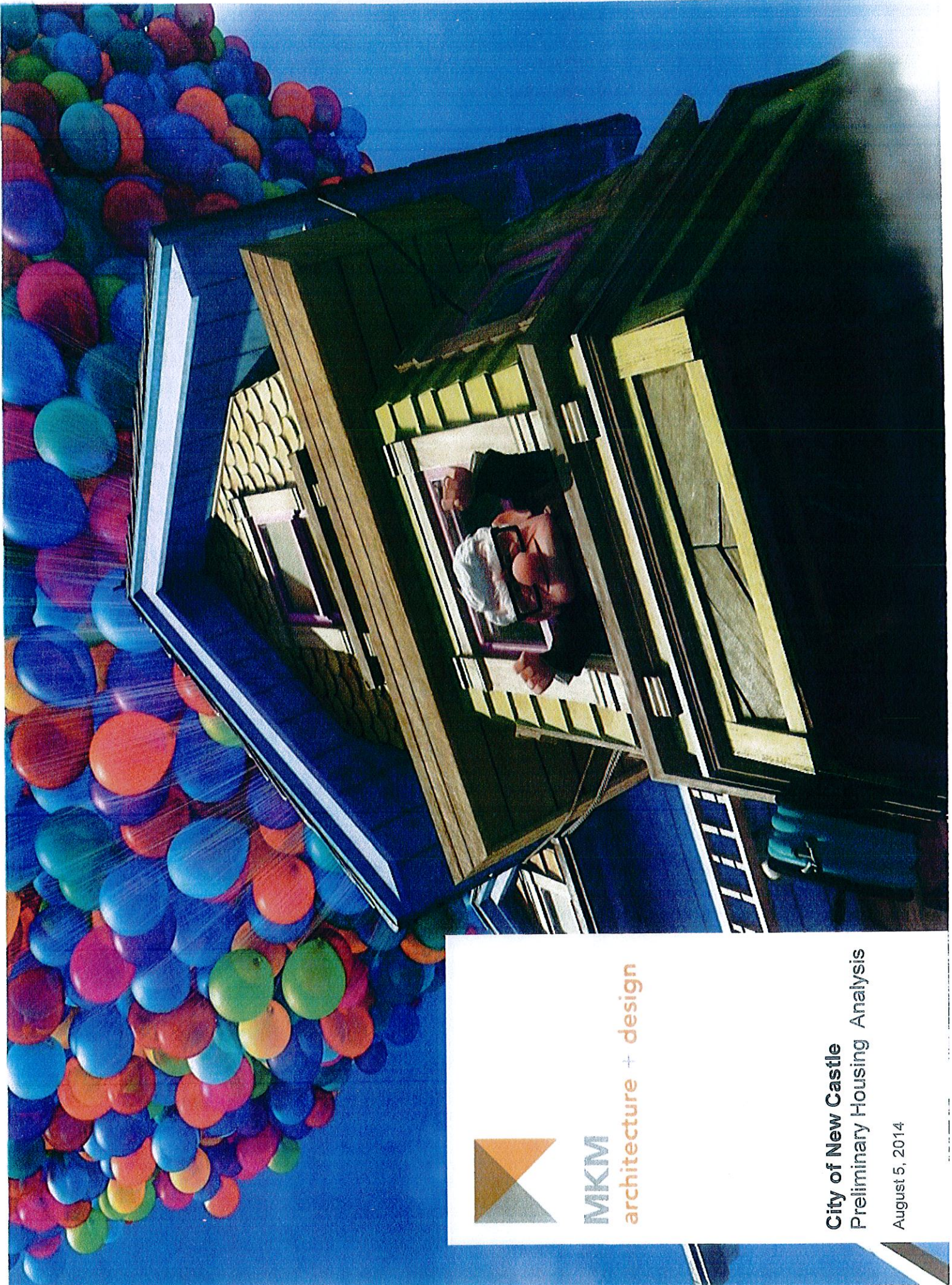
- Needed Connections
- Abandoned Rail Road Corridor
- Barrier
- River Corridor
- Community Destination Locations
- Road
- River
- Abandoned Railroad
- Active Railroad
- Wilbur Wright Trail
- City Limits
- School
- Commercial
- Industry
- Park
- Downtown Commercial





MKM

architecture + design



MKM
architecture + design

City of New Castle
Preliminary Housing Analysis

August 5, 2014

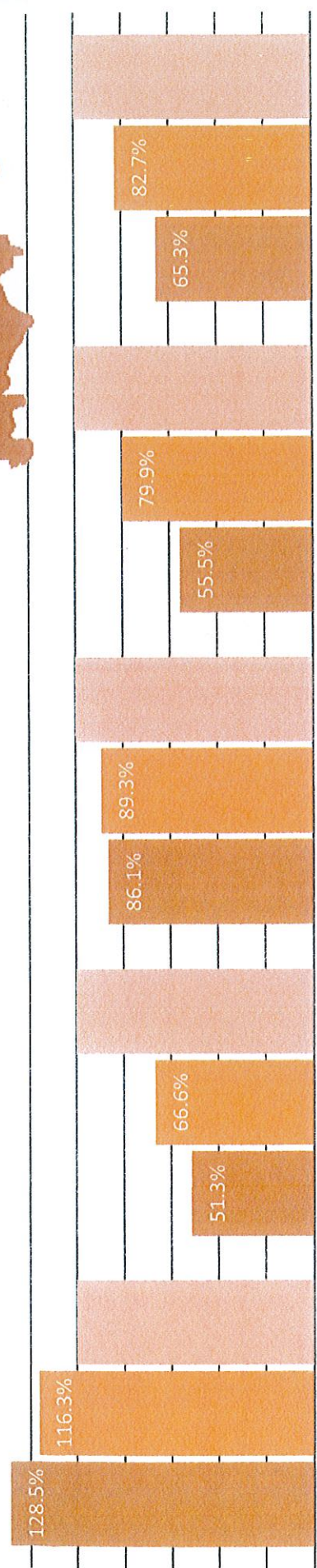


31 TARGET CITIES

POPULATION = 19,250,000 PEOPLE

ANALYSIS SUMMARY

NEW CASTLE COMPARATIVE DATA



Persons 65+ (2010) Bachelor's Degree or Higher (2008-2012) Homeowner Rate (2008-2012) Median Household Value (2008-2012) Median Household Income (2008-2012)

■ New Castle ■ Target City Average ■ Indiana

FUTURE HOUSING NEEDS

POPULATION PROJECTIONS





REPORT TO NEW CASTLE
MAYOR AND CITY COUNCIL
FROM HOPE INITIATIVE



Cathy Hamilton, Beverly Hankenhoff, Jimmy Kidd, Jerry Cash, Ruth Hayworth, Brad Crowe, Jeff Ray,
Liz Whitmer, and Dennis Hamilton



**Welcome to HOPE Initiative's Second "Taking the Pulse"
October 10, 2013, Public Library, 6:30-8:30**

What a difference a year makes.....

A year ago, an eclectic group of people came together, representing the city and surrounding area. They agreed that they wanted their "home" to be a safe place, a welcoming place, and a place where intentional planning was evident in the decisions made and actions taken. If that wish became reality, they believed that within just a few years, the area would enjoy "education and economic realities that commanded regional and national respect and that the area would be a national draw for arts events, recreational opportunities, and trails programs."

Right at one year ago, with Mayor York's blessing, HOPE Initiative began the facilitation of five community forums. We used blue post-it notes to get a response to our question "what is good in New Castle and surrounding area," and we used yellow post-it notes to get a response to the question "what would make our city and surrounding area even better." A total of 263 people at five forums rendered seven pages, typed single spaced, of wonderful reasons for living in this area. In this past year alone, several new wonderful reasons have become realities. Enjoy the following photos of improvements/enhancements taking place in just this one year.....knowing surely that we have left out some!

And then, of course, read our collective update on the areas identified as opportunities for the city and surrounding area to become even more powerful in the lives of its citizens and visitors.



The long-awaited Wilbur Wright Trail opened in October, 2013, thanks in great part to the tireless effort of Healthy Communities of Henry County.



And the City of New Castle kept its promise to extend the Garner Street sidewalk to the WWT, making the trail even more accessible. Bike and foot traffic on the trail has surpassed expectations. Kudos to a healthy option for Henry County residents as well as visitors.



The City's Northend benefitted by Habitat for Humanity's moving RESTORE to Broad Street.



A small lavender farm, Millstone Farms and Gardens, opened for business even further north, near the hospital, the first new business in this area in decades.



**50,000 sq. ft. spec building;
Expandable to 200,000 sq. ft..**

Industrial Park: 3995 Brooks Drive, New Castle, IN 47362



The Newly-Painted Art Annex



New Animal Shelter is showcased at the December Open House



IVY Tech Campus in New Castle opened to students this year.



Jennings Project: New Business and New Housing



Six buildings came down to make room for a new parking lot and streetscape, and digitized walk-lights were installed on Broad Street. Building owners in the distance spruced up their places in response to new visibility. Kudos to them.



A new gasoline station and "quick" store opened on East Broad Street.



Buffalo Wild Wings is scheduled to open in November!



Maintaining excellence: Henry County Hospital re-seals its parking lot this October. (Lovely. Thank you!)



An effort is being made to create temporary housing for homeless men, using the old senior high school. Called "The House," several rooms have been created to move homeless men from the streets, to shelter, feed, and mentor them. This also relieves the overcrowding at Love Center.

2013-2015

Systematize beautification through education, expectation, and “hand-up”: Enforce ordinances that ensure cleanliness, mown yards, safe housing, and appropriate waste disposal.

- Mayor Greg York has ordered the demolition of 20 houses in the city since taking office; some have come down. Civically, Habitat for Humanity has taken down two houses and completed a double build. Privately, several citizens have financed the tearing down of uninhabitable houses in the city/county. (There remain several houses on the demolition list.)
- **Enforcement of cleanliness/orderliness ordinances at required level continues to escape us.**
- Churches, civic groups, and United Fund have orchestrated several clean-up days.
- Efforts have been made to keep Broad Street clean of pigeon droppings.
- Trees along Broad Street were removed.

Streetscape and Artscape (Murals and Signage)

- The Art Association of Henry County (AAHC) Director Vicky White, Healthy Communities member Jeff Ray, and HOPE Initiative Co-Director Cathy Hamilton attended a June two-day seminar in southern Indiana, sponsored by BSU’s “Building Better Communities” program. At the workshop, they learned that many communities have extended the arts into the larger community, creating a spirit for revitalization of their entire city. All left committed to doing their part in keeping the conversation alive in New Castle/Henry County.
- Director Vicky White and the AAHC Board, using the Arts Park, have taken a lead in downtown revitalization, getting new sidewalks in front of the park, and authorizing Ed Terrantino’s leadership in enhancing the Arts Annex, getting it painted and installing an arts gift shop in the Annex. They have hosted street fairs and concerts, putting the park more in the community’s public eye, and opened the area to the community through planned events (a Garden Tour participant, a co-sponsor with Henry County Concert Series of the first county music and arts fair, and host for the recent “Souper Supper”).
- They have extended hours for the Art Gallery.
- The Art Association of Henry County, partnering with Healthy Communities and HOPE Initiative, has applied for a consultant-in-residence to join efforts in expanding the arts further into the community.
- The City of New Castle financed the taking down of six buildings which clears the way for a parking area/streetscape.

Address the CSO Mandate

- Mayor York has authorized increased work on CSO, addressing a government mandate to bring the city into compliance.

Manage safe, beautiful parks

- Eighty-seven trees that were professionally perceived as dangerous to people were removed from the parks and seventy-two trees replanted.
- All park playground equipment were given a paint job, thanks to United "Day of Caring."
- Shelter houses have been repainted.
- Cameras have been installed at Baker Park.

Complete Broad Street revitalization, including occupation of the Jennings Building (Greg York, REDC, Private Entrepreneurs)

- Six buildings have been demolished, making way for a parking lot and an outside dining area.
- The deed and government tax credits for the Jennings building have been transferred to a private entrepreneur.
- All four condominiums, part of the 2009 NSP grant, have been sold.

Maintain strong economic development program, soliciting diversity in employment opportunities (Corey Murphy, Greg York, et al)

- Work One continues to partner with Economic Development Council
- Henry County Spec Building is generating inquiries and visits to the city
- With Anderson and Muncie, New Castle has been awarded \$150,000 planning grant from the US Economic Development Division aimed at even greater revenues to revitalize work opportunities in the region.

Secure tenant for EDC spec building

- Consensus is that we not panic in filling the building...be patient. While the spec building is receiving visits, its real asset right now is that it is drawing people to look at the entire area.

Increase varied marketing efforts on behalf of the city and surrounding area

- *Savor Indiana* has presented its product to city council; the product will cost \$10,000
- A New Castle/Henry County marketing team was announced October, 16, 2013.

Utilize TIF and various other fund sources to attract new and diverse business options, employment opportunities (REDC)

- TIF incentives were an enticement for California investors in Jennings building.

Housing Assessment should be completed and the process for the Unsafe Structure Ordinance Updated

- A housing committee has been together for some time, chaired by Kevin Polivick and Jerry Cash, attended by representatives from City Government, HOPE Initiative, Westminster, and Habitat for Humanity, private realtors, among others.
- Several fact-finding trips have been made to see Muncie's Building Court.
- The Housing Committee has offered to direct an authentic housing assessment (as opposed to a "marketing study") and is seeking the city's commitment to finance the endeavor (up to \$35,000).

Senior Citizens Center re-established**

- This goal is in a study phase....need to talk to senior citizens and ICAP. Jerry Cash and Tom Nipp agreed to chair this conversation.

Civic Center Clearing House

No action at this time.

Wellness Center Functioning**

- After much discussion, the consensus is that this project should be partly encompassed in the study of the Henry County Justice System, currently chaired by Sheriff Butch Baker.
- Deputy Sheriff Stacey Guffey and Director of Emergency Services at Henry County Hospital Kris Manning have agreed facilitate the study of the Wellness Center, as has CJ Johnson, Director of Meridian Services.
- ARIES, a local substance abuse program, is offering @ \$25,000 to combat drug issues.

Install lighting in oft traveled areas**

Install litter and street signage**

Installation of new street signs has begun.

Install signage at six primary city entries

- HOPE Initiative, with the Mayor's blessing, is sponsoring an art contest around this project. Open to the community, artists are encouraged to design a visual that would welcome visitors to our city. The winning design will be determined by a diverse committee. Chairs for this project are Beverly Hankenhoff and Cathy Hamilton.

Enhance educational offerings, PreK-12, post-secondary, and collegiate Danielson/IU East, IVY Tech, BSU**

- **More voices need to be heard on this project, but progress is yet being made.**
- IVY Tech opened for classes this year, with local monies helping to enlarge the facility before it opened for classes.
- A study of a State of the Art Early Education Center is being facilitated by Corey Murphy, Director of EDC, and Nan Polk, New Castle BOE Member.

Increased code enforcement personnel**

- **This remains an issue. With 8000 households, using the building inspector also as the code enforcement officer derails any effort to really enforce codes. Hopefully, city budget, through the mayor and council, will separate these two duties and hire intentionally. Enforcing legally created ordinances creates the most expeditious way to move from a hand-out to a hand-up culture. No one rises to a low expectation.**

Maintain safety for and from animals

- Under the leadership of Director Linda Bir Conn and a visionary Board, and with the generosity of the late Mary Polk, a wonderful animal shelter has been built, opening in December, 2012.
- The shelter contracts with the county and city for animal control.

2013-2018

Landscaped Spaces at Jennings Building & Justice Square

- Professional landscapers attend to the space at the Historic Court House.
- (See "Complete Broad Street revitalization")

Sidewalks/bike trails installed, connecting to parks, to our "rails-to-trails" and to schools

- Chairpersons Jeff Ray and Rex Peckinpaugh are chairing this effort and have secured architects and engineers to drive the project, already familiar with the area as the designers of the WW Trail.
- HOPE Initiative secured a \$15,000 grant from Henry County Foundation toward the \$35,200 phase one of this project; **the city has been asked to use "riverboat" monies to fund the other \$20,200. This phase takes six months to complete. Securing phase one locally, the committee will seek state and federal funding for phase two/completion. If we start this process right away, we can go for spring grant opportunities for the final phase.**

With the County, address justice issues

- In late summer, several citizens attended a countywide seminar on justice; two out-of-state consultants facilitated a conversation as to "next steps."
- A committee led by Sheriff Baker is seeking an expedited needs assessment and simultaneous emergency aid for leaking roof.

Green spaces throughout city, including a "Victory Garden" & Orchard

- THE Place began a gardening program this summer.
- Westminster operates a greenhouse for the neighborhood each summer.
- NewCastlePride has begun restoration of Maxwell Park. CSO system into compliance/maintained. Questions arose as to whether the soil is suitable for edible plants.

Appropriate housing rehabilitation and/or development begun

- This work is constantly on the mind of several citizens/organizations (Westminster Center, Habitat for Humanity, City of New Castle, HOPE Initiative, to name but a few); however, there is consensus that a building development program must follow an authentic housing assessment: What do we have? What do we need to do with what we have? What housing is lacking?

Enhanced educational, recreational, *and employment* opportunities for youth

- The study of pre-school through post-secondary education will address the education piece of this project.
- There has been a creation of the Miracle League, a baseball opportunity for people with disability who do not play on other existing teams.
- A renovated bowling alley has made it a national draw for advanced leagues as well as a local favorite for recreation.
- The questions to be answered include a detailing of what already exists and for whom and who is underserved. Another issue is marketing what we have once we delineate our holdings.
- **What employment/volunteer opportunities exist for our youth?**

Enhance public transportation opportunities

- Address road conditions
- Assess public transportation availability to all demographics

Establish monitoring system to better ensure fidelity to strategic plan: Host bi-annual forums, taking the community pulse: How are we doing as a safe, invitational city? (HOPE Initiative adopted this goal.)

- HOPE Initiative has hosted two “take the pulse” meetings this year
HOPE attends Council meetings to enhance communication
HOPE provides written reports on progress/barriers to the framework

Maintain strong communication with County/State governments to better insure partnerships on projects in-common

- HOPE Initiative has hosted two “take the pulse” meetings this year
HOPE attends Council meetings to report on such meetings
HOPE provides written reports on progress/barriers to the framework
- HOPE Initiative is scheduled to present its process to County Council, Oct. 30
- Leaders in the community are partnering with County, State, and Federal entities to enhance the city, with the goal of creating a more liveable community

**Partner with other entities to ensure the most stable future:
Education, business, neighboring communities, and civic
organizations:**

- Chamber of Commerce, Visitors' Bureau, and EDC are working in common on major issues (new marketing committee is formed and continues to work over time)
- A major asset to the area is its sheer number of civic groups and churches; an effort is being made to get churches, civic organizations, and food pantries to more effectively work together to offer hand-up to citizens

Every part of city reflects citizen pride**

- The study is concerning itself with getting homes and surrounding area repaired and clean so businesses can be wooed to every area of the city; all schools are respected for work rather than stereotypes around demographic; and how to move away from language that derides parts of the city

2016-2028

**If the above framework is honored, meaning action follows words, the
following can be New Castle's systemic truth:**

**Education and Economics realities
command regional/national respect.**

**The area is a national draw for arts events,
recreational opportunities, & trails program.**



2600 C Avenue P.O. Box 603 New Castle, IN 47362
Phone (765) 529 - 5124 Fax (765) 529 - 5562

Belmont Neighborhood Residential Revitalization

The Belmont Neighborhood , led by long term resident Westminster Community Center, is planning a rebirth of quality, affordable, desirable single family housing on A, B, C, D and E Avenues in South-East New Castle, Henry County, Indiana.

Quality - constructed of low-maintenance, environmentally friendly materials

- Designed for high energy efficiency, making cost of living in a Belmont home less
- Built to last by local contractors, craftsmen from Henry County, and residents of Belmont

Affordable – Single family homes of 1,500 to 1,800 square feet for sale to qualified buyers.

- Built of durable, low maintenance, energy efficient materials for lower living costs
- Homes include valuable side yard and all new underground utilities

Desirable – designed for families with 3 and 4 bedrooms, 2-3 bathrooms

- Full of features normally found in more expensive homes: attached garages, front and rear porches, large laundry rooms and lots of storage

Funding Source:

Westminster Community Center is a not-for-profit agency which has existed since August of 1956. Throughout these years our major source of funding has been community support given by . . .

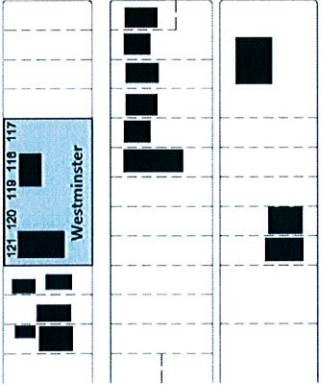
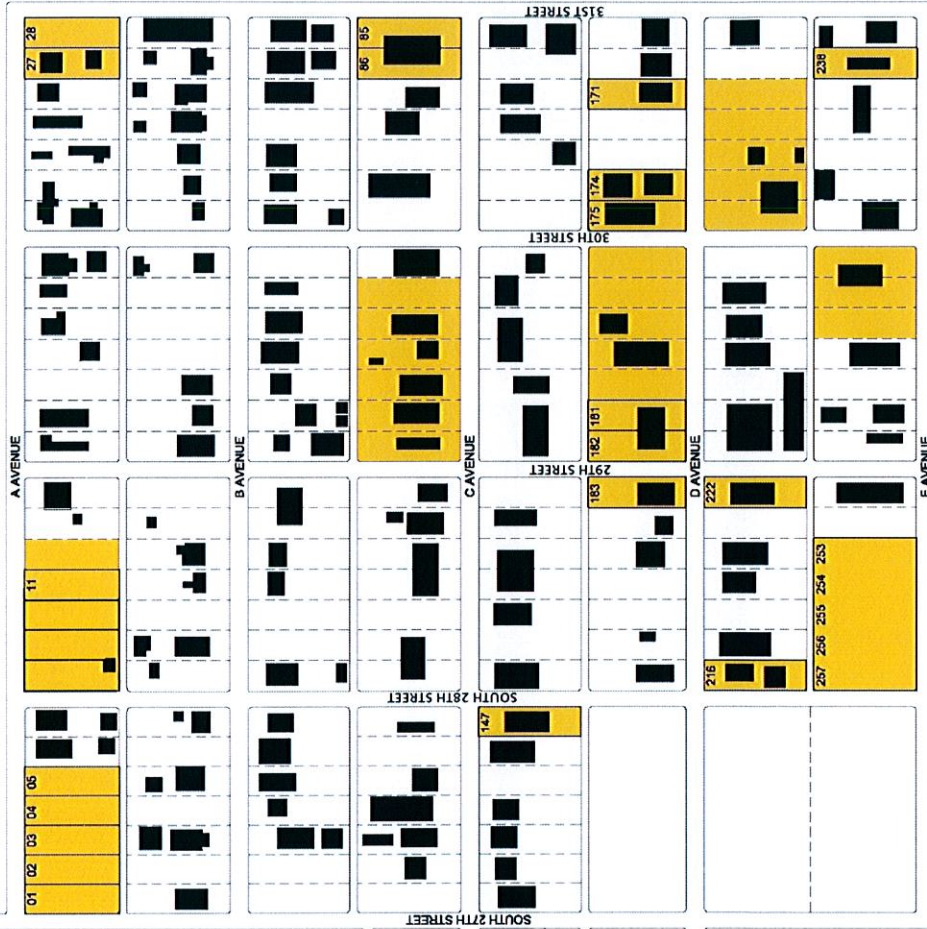
- Local businesses,
- Churches,
- Schools,
- United Fund,
- Henry County Community Foundation
- Grants
- Family and Individual Donations

95% of our funding is by way of private contributions each year with very little government or social service resources.

Collaboration of Agencies

Westminster Community Center has worked hand-in-hand with both the City of New Castle and all of the Community Partners in this project. We have brainstormed to solve community issues, we have pooled our resource to better our neighborhoods, planned programs together. We have collaborated and supported one another. All of us bring resources to the table which enables us to do greater good for our community. These agencies work well together!

**Westminster Community Center
Properties**

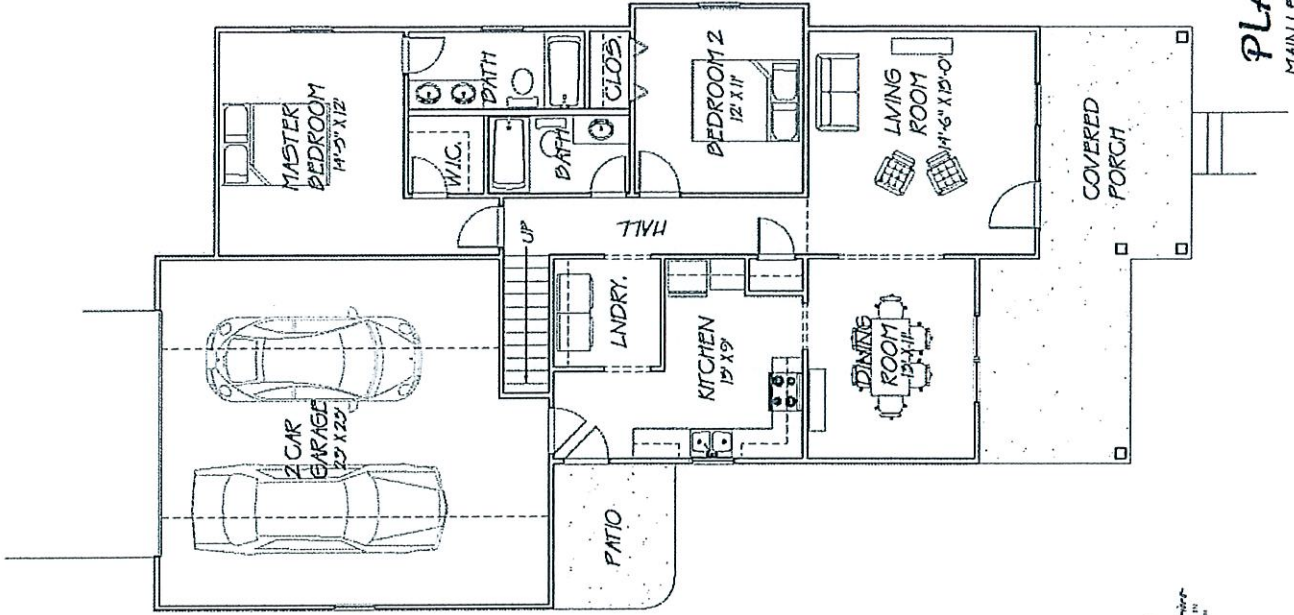




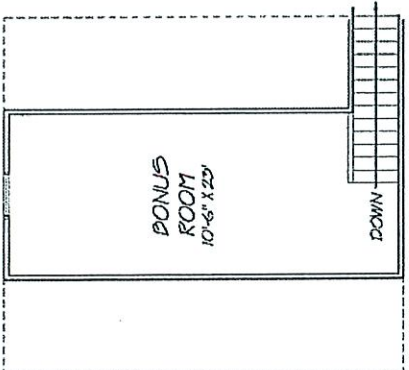
ELEVATION "A"


Callan
Architecture & Interiors
209 N. Elm Street, Henderson, TN
(765) 623-8834 (765) 486-2506



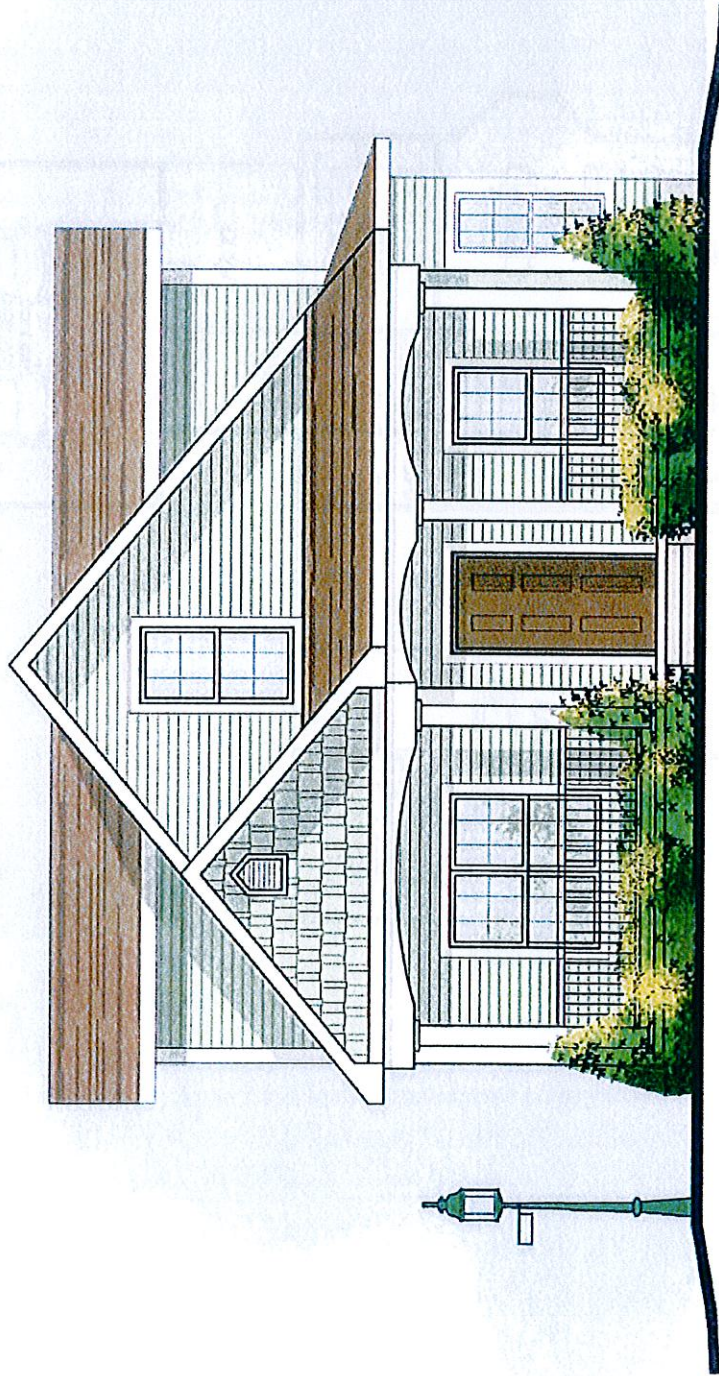


PLAN "A"
MAIN LEVEL 1234 SF.



ROOM ABOVE GARAGE 240 SF.

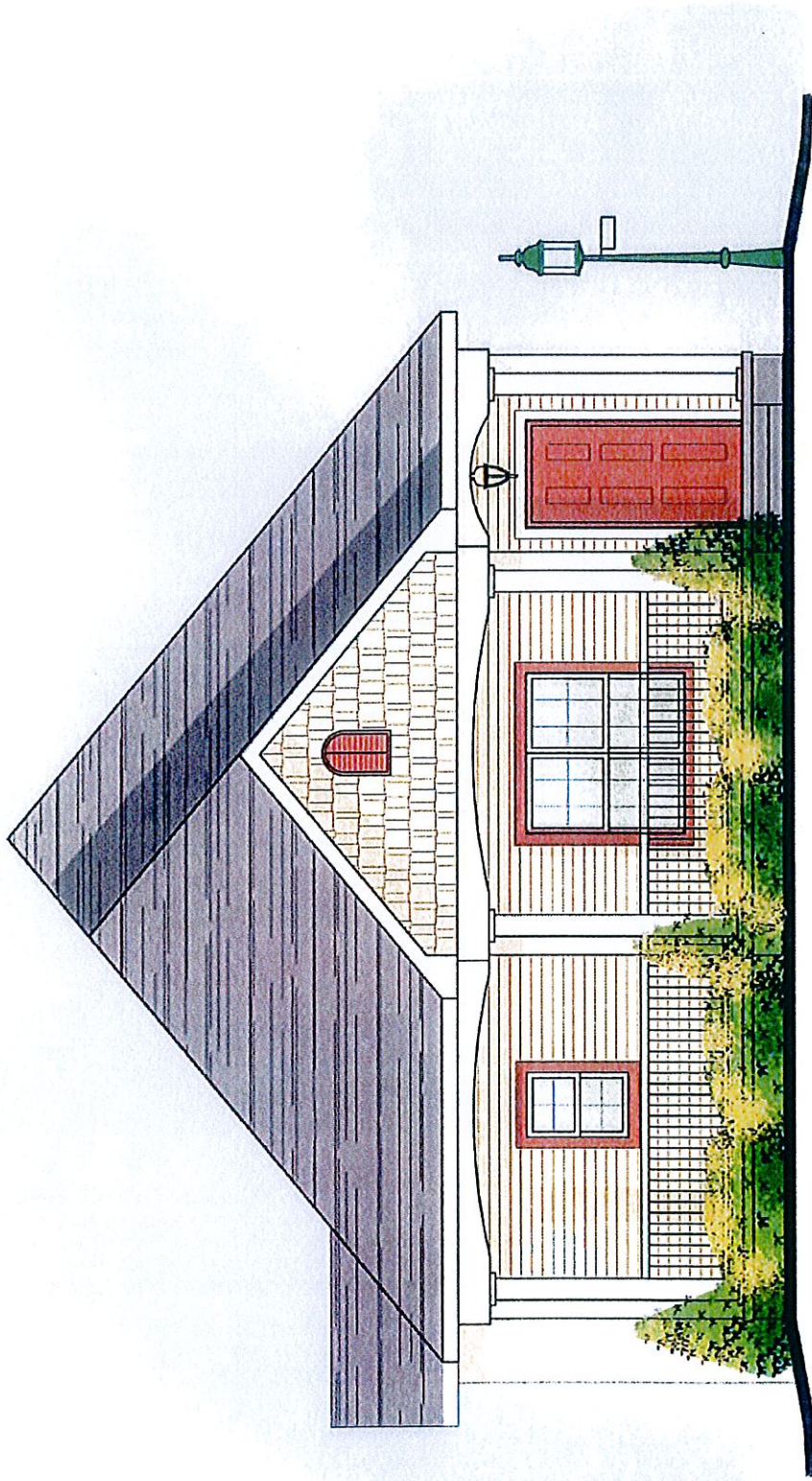




ELEVATION "B"


Lamar
Architecture & Interiors
208 N. Elm Street, Indianapolis, IN
(317) 321-8144 (fax) 469-5399

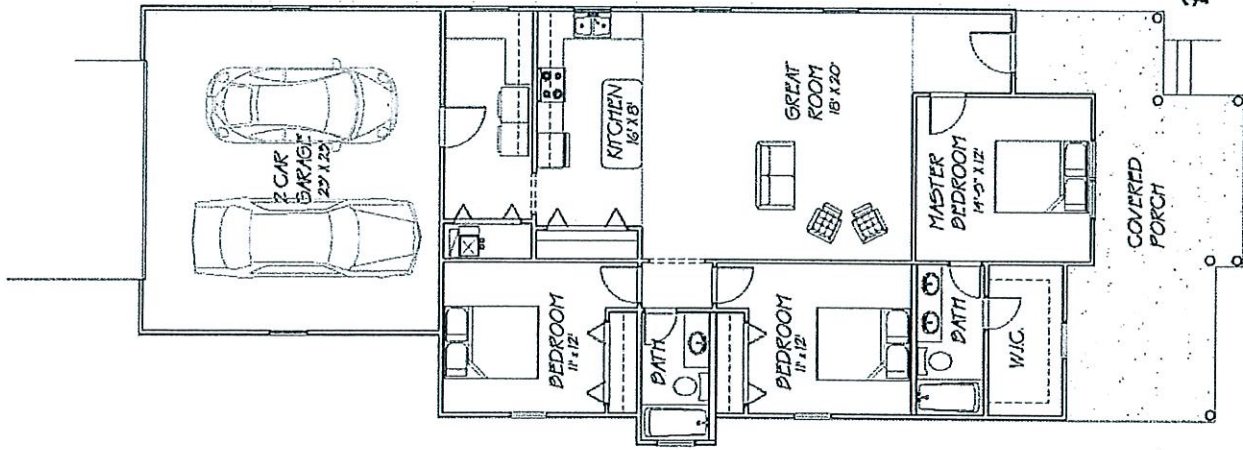

westmins for



ELEVATION "C"

 **LaMar**
Architects & Interiors
209 N. Elm Street, Hagerstown, IN
(765) 624-8344 (765) 496-5708

 **Westminster**



PLAN "C"
1400 SF.

Miller
Architects & Interiors
1000 N. 10th Street, Tallahassee, FL
904.933.1111





INTERLOCAL COMMUNITY ACTION PROGRAM, INC.

615 W. S.R. 38 • P.O. Box 449 • New Castle, IN 47362 • Phone (765) 529-4403 • Fax (765) 593-2510

Serving Delaware, Hancock, Henry and Rush Counties

August 1, 2014

The Honorable Greg York
Mayor of New Castle
227 N. Main St.
New Castle, IN 47362

RE: Blight Elimination Program

Dear Mayor York:

Please accept this correspondence as our commitment and support of your application to the Blight Elimination Program.

We have agreed to be a Community Partner and in so doing, intend to take possession of the properties assigned to us. We will replace empty lots with affordable housing, including a transitional housing unit. Additionally we would like to develop a pocket park next to one of the properties that the City owns.

Also, we will provide technical support services to the grant if it is awarded upon your request.

Best wishes on this application.

Sincerely,

A handwritten signature in dark ink, appearing to read "Kevin P. Polivick". The signature is fluid and cursive, written over a light blue background.

Kevin P. Polivick
Executive Director

August 14, 2014

The Honorable Greg York
227 N. Main Street
New Castle, Indiana 47362

Dear Mayor York:

It is my pleasure to write a letter in support of Henry County's proposed blight elimination project that is being submitted to the Indiana Housing and Community Development Authority Blight Elimination Program.

Part of the mission of New Castle Main Street is to renew and grow downtown New Castle by fostering community pride. As Director of New Castle's Main Street I believe that this program will help achieve these goals and positively impact our city. Eliminating these blighted houses will help us create a more visually appealing and safer place to live.

I will use what resources are at my disposal to support the efforts of ICAP as they seek the funding for the blight elimination program.

Sincerely,

Carrie Barrett
Director, New Castle Main Street

New Castle Housing Authority

274 S. 14th Street

New Castle, Indiana 47362

Phone: 765.529.1517 FAX: 765.521.9529

www.newcastleha.org



August 8, 2014

The Honorable
Mayor Greg York
Office of the Mayor
227 North Main Street
New Castle, IN 47362

Dear Mayor York:

It is my pleasure to provide this letter of recommendation and support on behalf of the City of New Castle's intent to apply to the Indiana Hardest Hit Fund for grant funding for demolition of vacant and abandoned houses in New Castle and Henry County. As those of us who have been attempting to address this problem for some time now realize, there is a significant problem with neighborhood blight associated with these vacant and abandoned houses and there are simply not enough resources for the City of New Castle and other communities in Henry County to be able to adequately address this issue.

The New Castle Housing Authority has been participating in the local Housing Committee that has been instrumental in procuring a Housing Study for the City of New Castle. That study is nearing completion and preliminary results demonstrate that ours is a community with significant blight in the form of structurally unsound and abandoned housing units. Furthermore, we are aware that the City of New Castle has developed a list of close to one hundred abandoned and blighted houses that, left standing, will only contribute to a negative image for city and county and which logically will only lead to more of the same.

If I can be of further assistance to you on behalf of your efforts, please do not hesitate to contact me.

Sincerely,

NEW CASTLE HOUSING AUTHORITY

A handwritten signature in black ink that reads "Jerry W. Cash".

Jerry W. Cash
Executive Director



8/14/14

To Whom It May Concern:

The office of Three Rivers SWMD is pleased to be able offer our services for the Blight Elimination Program in New Castle. Our office addresses several waste streams and provides residents of Henry County with the programs/services for recycling and proper disposal of household hazardous waste, electronics, tires, fluorescents, batteries and public recycling sites for paper, plastic, glass, metal/bi-metal and cardboard. The services that this district provides are directly related to the health and welfare of our community. We are pleased to participate in this project.

Sincerely,

A handwritten signature in black ink, appearing to read "JoAnne McCorkle", is written over the typed name and title.

JoAnne McCorkle
Director-Educator
Three Rivers SWMD



2600 C Avenue P.O. Box 603 New Castle, IN 47362
Phone (765) 529 - 5124 Fax (765) 529 - 5562

August 11, 2014

Dear Mayor York,

As you know Westminster Community Center has been diligently working to reduce the slum and blight located in the Belmont neighborhood here in New Castle. Since September 2005, we have acquired forty-nine lots with eighteen below sub-standard houses located on them. To date we have demolished twelve of those houses without displacing one family unit. Westminster has been maintaining these lots with a vision for future construction of one house on two lots providing families with more green space.

With this in mind, Westminster Community Center is very supportive of all that your administration is doing to reduce slum and blight in our community. We deeply appreciate your efforts in pursuing the BEP Grant which will assist the city of New Castle and Henry County residents in demolishing dilapidated, abandoned homes that present a negative image for our city and county alike. Westminster appreciates the opportunity to step forward and become a community partner in this endeavor with hopes that together we can improve the quality of life of those whom we serve.

Sincerely,

Jeffery L. Kundert
Executive Director

New blight funds awarded

BY LISA PERRY | Posted: Monday, June 30, 2014 3:09 pm

Two more Indiana cities have been awarded blight elimination money as the deadline for Henry County's Hardest Hit funding application draws near.

Lt. Governor Sue Ellspermann announced that Fort Wayne and South Bend were awarded more than \$6.3 million to help eliminate blighted and abandoned homes through the Hardest Hit Fund Blight Elimination Program. The two cities were in the second of six rounds for BEP distributions.

Officials for Spiceland, Middletown, Knightstown, and New Castle are making the final push to complete the necessary application process in time for the August round five deadline.

"The month of July is critical," Interlocal Community Action Program Executive Director Kevin Polivick said Monday. Hope Initiative and ICAP have agreed to partner with lead applicant New Castle and support the program, but Polivick said more partners are sought. For more information, call ICAP at 765-529-4403.

Polivick said he is still sifting through the mayor's demolition list to determine which houses are eligible for the grant. The goal is to find 50, he said. Applicants can be awarded up to \$15,000 or more per blighted house, if certain qualifications are met.

BEP provides an opportunity for local units of government in all 92 Indiana counties to compete for funding to eliminate blighted, vacant, and abandoned homes and decrease foreclosures. BEP funds will come from the \$221.7 million Hardest Hit Fund allocated to Indiana. The U.S. Department of the Treasury approved the use of \$75 million of Indiana's Hardest Hit Funds by Indiana Housing and Community Development Authority (IHCDA) for successful BEP applicants.

Blight fund deadline nears

By Lisa Perry | Posted: Tuesday, June 17, 2014 5:35 pm

Civic leaders face a multi-million dollar deadline in the effort to find ways to tear down unsightly housing.

Interlocal Community Action Program Executive Director Kevin Polivick said there is a lot of work to be done before an Aug. 18 deadline to apply for some of the \$14 million that may be available from the Hardest Hit funds. The money can be spent to tear down unsafe and unsightly housing.

Polivick told civic leaders assembled Tuesday at New Castle Senior Center that blighted houses must be identified, a 10 percent funding match offered and ownership established. Partners willing to take control of the property for three years must come forward.

Middletown, Spiceland, Knightstown and New Castle have partnered to apply, with New Castle designated as the lead agency. Distribution of funds is not guaranteed, and Henry County must compete with the other 31 counties. Hardest Hit funds are scheduled for distribution Sept. 15.

“Homes are a critical piece, as are partners. We need to get going here,” Polivick said. “By the submission date of Aug. 18, we can’t be wishing any more.”

ICAP Special Services Director Larry Schmidt said Henry County could receive up to \$15,000 to \$25,000 for each targeted house. The goal is to include at least 50 Henry County homes on the application. More money could be awarded for acquisition fees, demolition costs, property management costs.

The grant expires Dec. 31, 2017. For each year that a property owner keeps ownership of the property after demolition, one-third of the debt is forgiven, Schmidt said. After the third year, no payback is required.

Knightstown Town Council President Clyde South came to Tuesday’s meeting with a file full of such homes.

“I got 10 here in this folder. I could get 10 more tomorrow,” South said. “We’ve been chasing them from courtroom to courtroom for years.”

Ownership must be clear, Polivick stressed.

“If Mrs. Jones is living in California and you can wheedle-deedle her into turning it over,” Polivick said, inclusion of the properties could be considered.

New Castle has 108 houses on the demolition list up for consideration. Economic Development Corporation President Corey Murphy said Richmond has been acquiring properties and then transferring them to others for more long-term program partnership.

“I like the efficiency of it,” Murphy said.

“We are looking for the worst of the worst,” Schmidt said. Uninhabitable homes with structural damage, mold, lead paint, or asbestos will likely be scored highest for the grant. An “end use,” or plan for the property’s use once the abandoned property is cleaned up, would also be an advantage. Finally, if a property has complaints about it on file with police, fire, or building inspector, it could boost chances for grant selection.

Suggested program partners are faith-based entities, community development organizations, homeowner associations, economic development groups, and neighborhood groups, among others.

Schmidt expects that most demolished properties will become green space. The new green space could be divided in half and donated to property owners on either side.

Some expressed concerns that the grant could be used as a bail-out for negligent homeowners who allowed their properties to fall into extreme disrepair, and feared that the cost of demolition may outstrip the value of the improved property.

Hope Initiative Director Cathy Hamilton said that at times, citizens are faced with the choice of cleaning up blight or living among it.

“Sometimes it does come down to cleaning up other people’s bad choices,” Hamilton said.

City grants matching funds needed for blight elimination request

By KEVIN L. GREEN | Posted: Tuesday, August 5, 2014 5:08 pm

New Castle City Council authorized matching funds to boost Henry County's application for the Indiana Housing and Community Development Authority Blight Elimination Program.

ICAP Executive Director Kevin Polivick has been working to secure IHEDA funds on the city's behalf. He reported Monday that as many as 80 houses are being looked at for inclusion on the application, but said focus right now is on about half that many.

"We hope to demolish them within the next three years," he said.

Economic Development Corporation President Corey Murphy said that New Castle, Middletown, Knightstown, and Spiceland have banded together to apply for a portion of the \$75 million set aside in the BEP. BEP authorities have made it clear at local town council presentations that civic entities banded together will increase the chances of award, which may have factored into local leaders' decisions to group the four Henry County towns together for application purposes.

The application, due Aug. 18, seeks \$720,000. Murphy said he anticipates that award monies represent an estimated \$15,000 per house. Polivick said that if it is discovered some of the structures involved have already been rehabilitated or razed by their owners, that figure would decrease accordingly. That has been the case with at least a few homes that were originally on the list the city plans to take down, he said.

Mayor Greg York was pleased the council voted to grant the matching funds.

"This is something that's very important we move forward with," he said. "I have a demo list of over 120 homes. We've already taken down 20 of those and this is going to provide financing for as many as 50 more if we can get it. This really is huge. It's going to help us clean up neighborhoods and get them back to where they need to be. We're talking about homes that, literally, aren't safe to walk in being taken down."

The loan application requires a 10 percent match by the city. Those funds are available.

"We have all the match in two different ways," York said. "One, in cash from the riverboat monies we receive ... and we also have some match money that's banked, that we've previously set aside so we wouldn't have to come up with all of it at once."

It has not yet been determined what will become of the properties once the houses on them have been demolished. Polivick said the search continues for community partners – service clubs,

fraternal organizations and others – who are interested in partnering with the city to help with upkeep and maintenance of the sites. For more information call him at 765-529-4403.

The Blight Elimination Program provides an opportunity for local units of government in all 92 Indiana counties to compete for funding to eliminate blighted, vacant and abandoned homes and decrease foreclosures.

The BEP funds will be drawn from the \$221.7 million Hardest Hit Fund money allocated to Indiana. In February, 2014, the U.S. Department of the Treasury approved the use of \$75 million of Indiana's Hardest Hit Funds by IHCDA for successful BEP applicants. The partnership between IHCDA and Treasury allows IHCDA to provide funding to local units of government to eliminate blighted properties and offer a variety of end uses for the newly cleared parcels, such as green space or redevelopment.

The BEP is not a grant program. It is a loan program that allows IHCDA to make funding available to successful applicants. The loans will then be restructured as forgivable loans using Hardest Hit Funds.

Henry County prepares to apply for blight funding

By LISA PERRY lperry@thecouriertimes.com | Posted: Sunday, June 1, 2014 6:03 pm

The state of Indiana has begun to award blight elimination funding. Henry County's turn to apply for the money to fix up abandoned houses comes in August.

Economic Development Corporation President Corey Murphy said that New Castle, Middletown, Knightstown, and Spiceland have banded together to apply for a portion of the \$75 million set aside in the Blight Elimination Program. Murphy said meetings in the near future are planned to potentially finalize the four-city consolidation.

BEP authorities have made it clear at local town council presentations that civic entities banded together will increase the chances of award, which may have factored into local leaders' decisions to group the four Henry County towns together for application purposes.

Murphy said he anticipates that award monies represent an estimated \$15,000 per house. Further studies are ongoing as the Henry County application is being prepared.

Murphy said the BEP will look at three major considerations: whether the properties are beyond repair, whether there is a clear path to ownership, and whether there is a willing program partner to shepherd the property through the next three years of ownership.

Five Indiana cities in the first district tapped to apply for state funds received a combined award of more than \$15 million to help eliminate blight, Lt. Gov. Sue Ellspermann announced in late May.

The first cities and their totals are East Chicago, \$1.3 million; Gary, \$6.6 million; Hammond, \$615,000; Indianapolis, \$6.4 million, and Lawrence, \$120,000.

The monies provide an opportunity for local units of government in all 92 counties to compete for funding to eliminate blighted, vacant and abandoned homes and decrease foreclosures. The total pot is \$75 million, drawn from \$221.7 million Hardest Hit Fund money allocated to Indiana by the U.S. Department of Treasury.

Individuals can tap money from the Hardest Hit Fund through the local Henry County ICAP office. For more information on how to apply for a Hardest Hit grant, call ICAP at 529-4403, or 877-GET-HOPE. As of April 30, Ellsperman said that about 3,300 individual homeowners have received an estimated \$37.8 million in Hardest Hit Fund mortgage payments.

8/14/14



LOCAL

FIXER DOWNER



Photo by Barbara Cross

This week's Fixer Downer is 438 N. 18th St. According to the New Castle building inspector, the owner is listed as Kimberly Stewart, also known as Kimberly Chase. Notices were sent to her at this address, but were returned as undeliverable. The property has been cited multiple times for uncut grass, weeds, and junk cars. The house is on Mayor Greg York's demolition list, but the date for destruction is unknown.

7/30/14

FIXER DOWNER



Photo by Barbara Cross

This week's Fixer Downer is an abandoned house with a double address: 208/210 N. 10th St. In 2010, the city issued an order of demolition for this structure to owner Daniel McCarthy. It has since changed hands and is owned by Jamie Kao of California. Kao was sent a letter in April advising him that the condition of the structure is substandard. To date, he has not responded. Kao has been cited into New Castle City Court Aug. 1, after which the fate of the building will be in the judge's hands. At present, no fines are being levied and there is no scheduled date for demolition. Information provided is the New Castle Building Inspector's office.